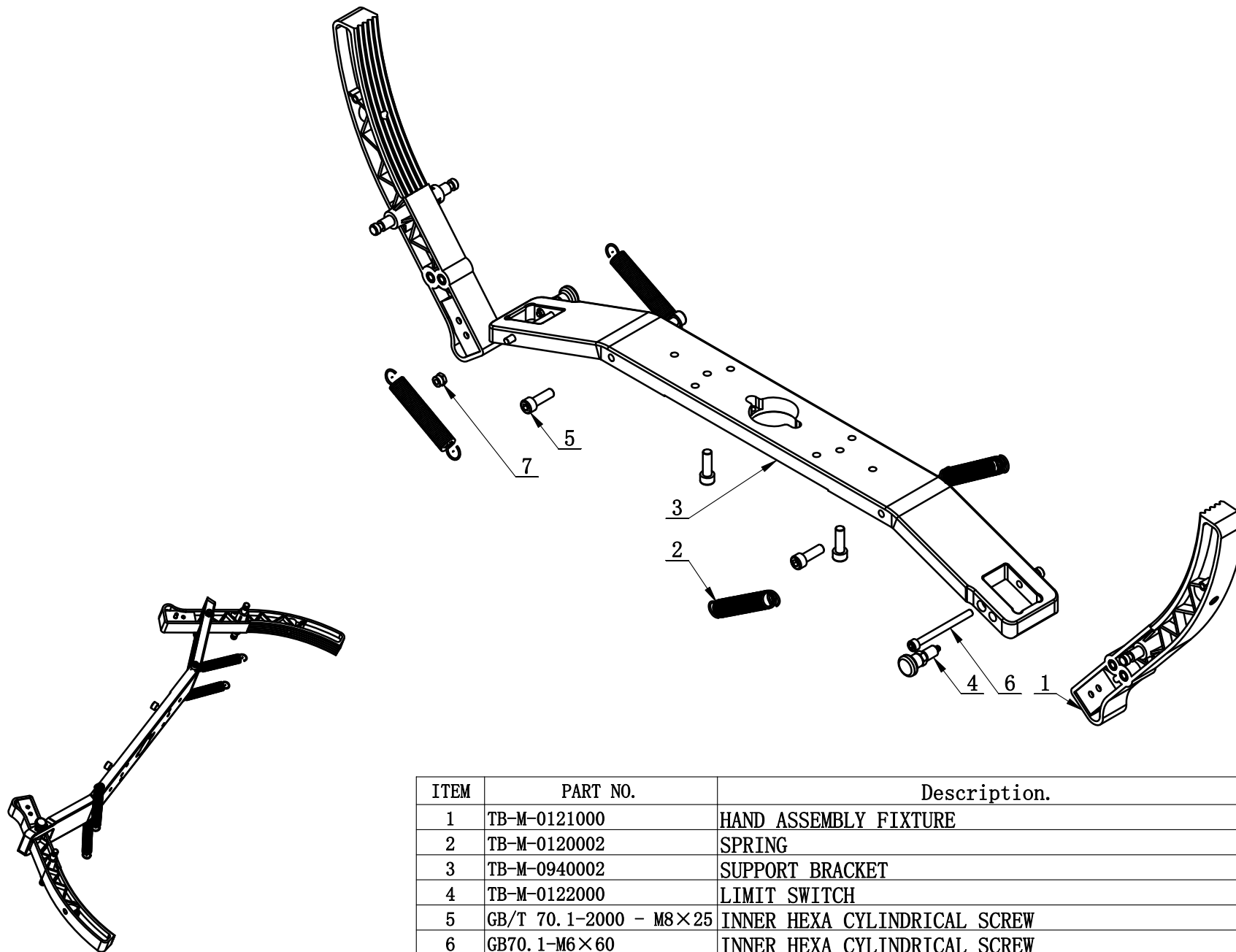
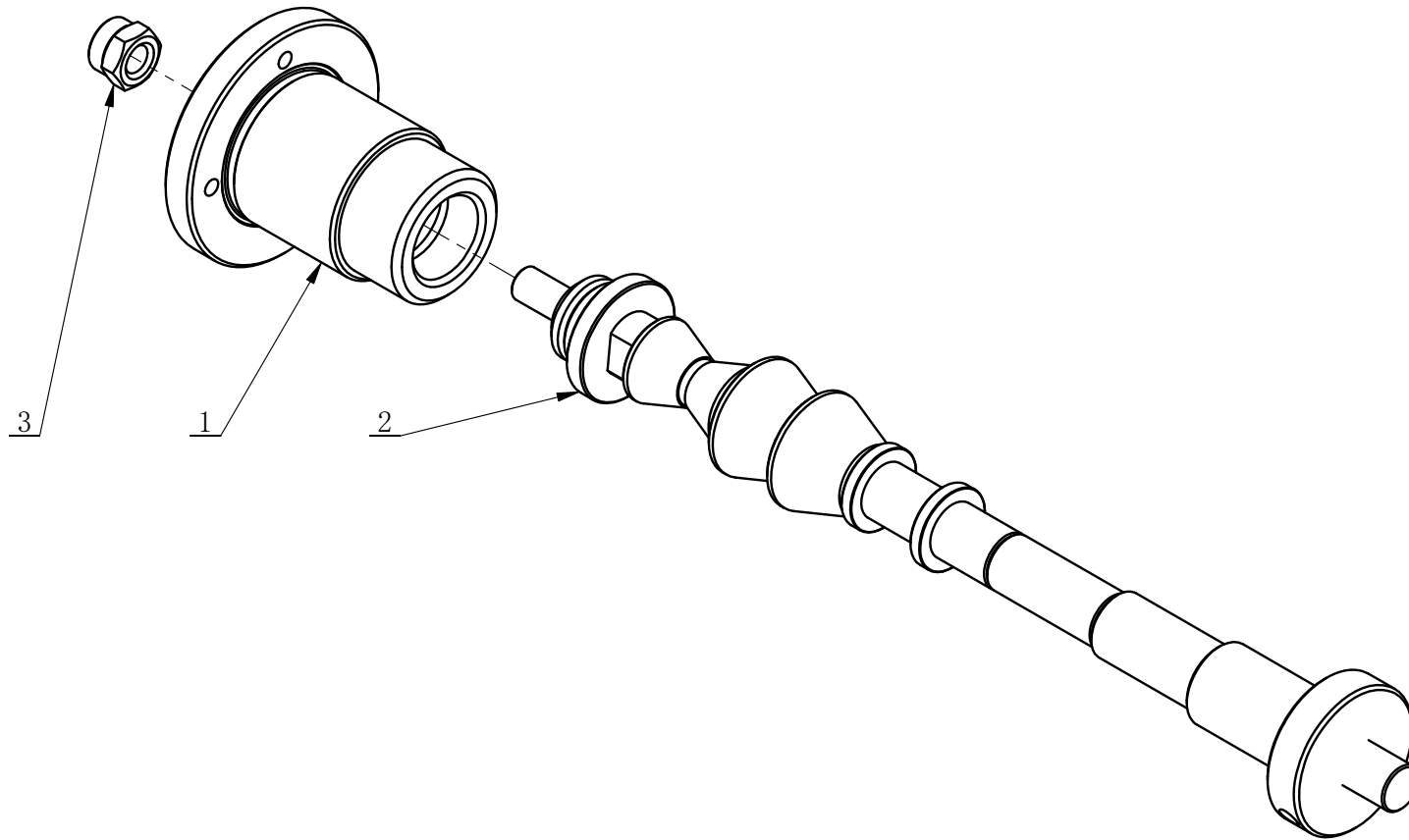


ITEM	PART NO.	Description.	QTY.
1	TB-M-0940000	MOTORCYCLE CLAMPING ASSEMBLY FIXTURE	1
2	TB-M-0130000	TO EXTEND THE FOOT ASSEMBLY	1
3	TB-M-0140000	BALANCE SHAFT ASSEMBLY COMPONENTS	1
4	GB70. 1-M6×12	INNER HEXA CYLINDRICAL SCREW	2



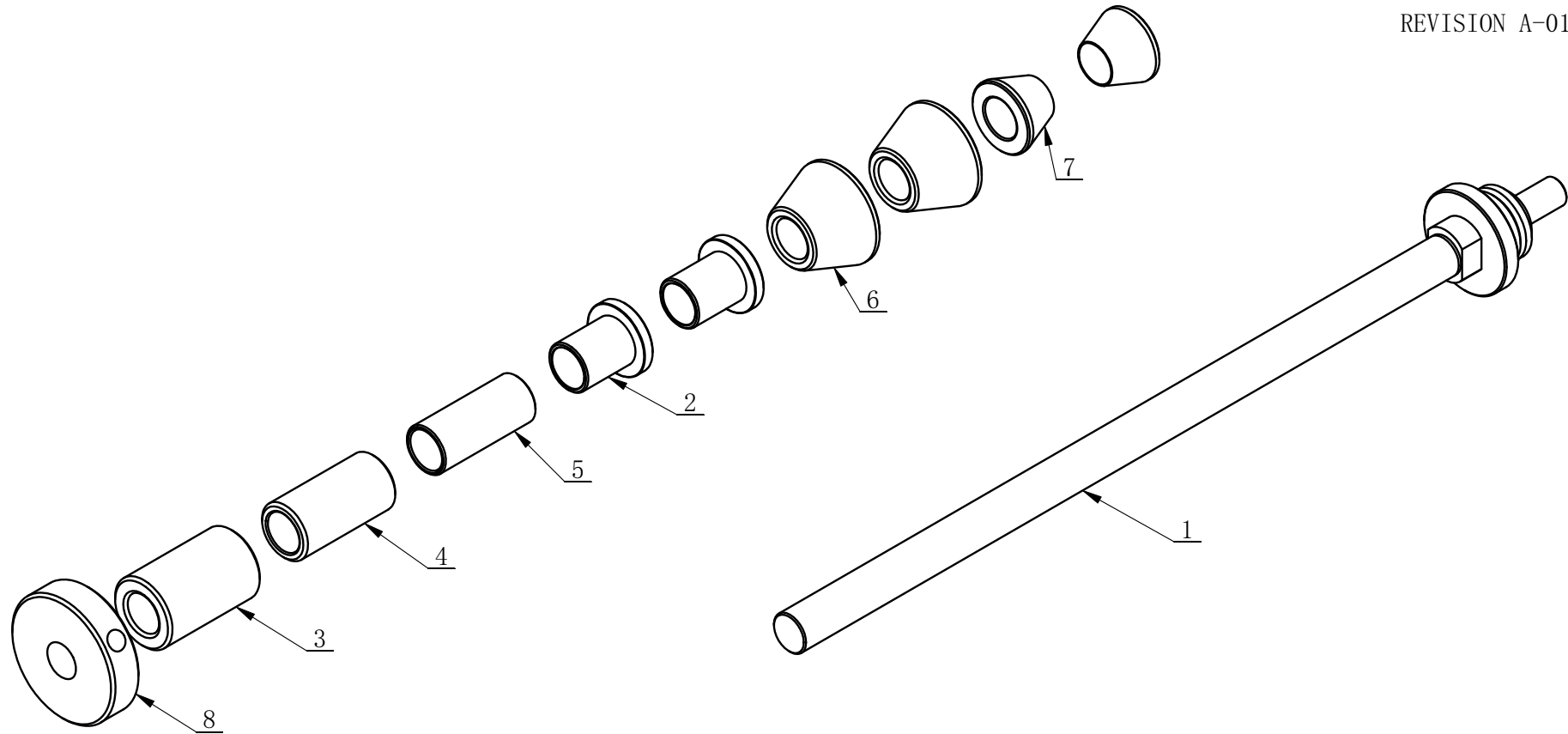
ITEM	PART NO.	Description.	QTY.
1	TB-M-0121000	HAND ASSEMBLY FIXTURE	2
2	TB-M-0120002	SPRING	4
3	TB-M-0940002	SUPPORT BRACKET	1
4	TB-M-0122000	LIMIT SWITCH	2
5	GB/T 70.1-2000 - M8×25	INNER HEXA CYLINDRICAL SCREW	6
6	GB70.1-M6×60	INNER HEXA CYLINDRICAL SCREW	2
7	GB889.1-M6	1-TYPE PREVAILING TORQUE TYPE HEXAGON LOCK NUT	2
8	GB77-M5×10	INNER HEXA FLAT TERMINUS SET SCREW	1



ITEM	PART. No	DESCRIPTION.	QT. Y
1	TB-M-0140001A	BUSHING	1
2	TB-M-0110000	BALANCE SHAFT ASSEMBLY COMPONENTS	1
3	GB889. 1-M10	1-TYPE PREVAILING TORQUE TYPE HEXAGON LOCK NUT	1

REVISION A-01

TB-M-0110000.



ITEM	PART. No	DESCRIPTION.	QT. Y
1	TB-M-0110009	MAIN SHAFT	1
2	TB-M-0110006	FURREUL 4	2
3	TB-M-0110003	FURREUL 1	1
4	TB-M-0110004	FURREUL 2	1
5	TB-M-0110005	FURREUL 3	1
6	TB-M-0110001	CONE (LARGE)	2
7	TB-M-0110002	CONE (SMALL)	2
8	TB-M-0110008	LOCK NUT	1