



WEAVER
E Q U I P M E N T

W-6PLR Portable Low-Rise Lift

Please read this manual before operation

WEAVER

L I F T



W-6PLR Installation & Operation Manual

6000 lb. Capacity Portable

Low-rise Scissor Lift



Derek Weaver Company, Inc.
2950 SE Loop 820
Fort Worth, TX 76140
817-560-9510
www.derekweaver.com

CONTENTS

Product Features and Specifications	1
Installation Requirement	2
Step of Installation.....	3
Exploded View	7
Operation Instructions.....	13
Maintenance Schedule.....	14
Trouble Shooting.....	15
Lift disposal	15

I. PRODUCT FEATURES AND SPECIFICATIONS (See Fig.1)

PORTABLE LOW-RISED MODEL W-6PLR

- Automatic safety lock: 3 position safety lock
- Automatic safety lock release
- Portable unit is easy to move with the power unit stand
- High speed: From 0-600mm in just 21 seconds
- Standard rubber pads included



Fig.1

MODEL W-6PLR SPECIFICATIONS

Model	Lifting Capacity	Raised Height	Lifting Time	Overall Length	Overall Width	Lowered Height	Runway Width	Width Between Base	Motor
W-6PLR	6,000 lbs	600mm	21S	1938mm	1780mm	105mm	456mm	868mm	1.0HP /110V

II. INSTALLATION REQUIREMENT

A. Tools requirement

✓ Screw Set



✓ Socket Head Wrench (8")



✓ Wrench sets: (13#, 15#, 17#, 19#)



✓Grease gun



✓Pliers



Fig.2

B. Power requirement

The electrical source must be 2.2KW minimum. The source cable size must be 2.5mm² and in good condition of contacting with floor.

III. STEPS OF INSTALLATION

A. Check the parts before assembly, make sure all the parts are completed.

1. Packaged lift, Parts box, Power Unit and Power Unit Stand.

Move aside the parts, Open the outer packing and check the parts according to the shipment parts list (**See Fig. 3**).

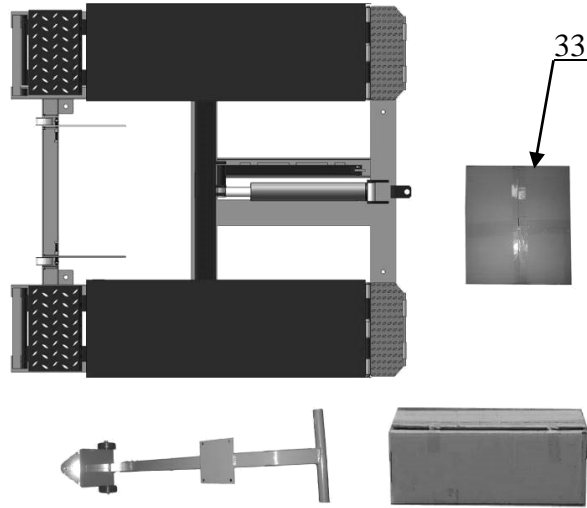


Fig. 3

2. Open the parts box, check the parts according to the part list (**See Fig. 4**).



Fig. 4

3. Check the parts of the parts bag according to the parts bag list (**See Fig. 5**).



Fig. 5

B. Install hydraulic power unit (See Fig. 6)

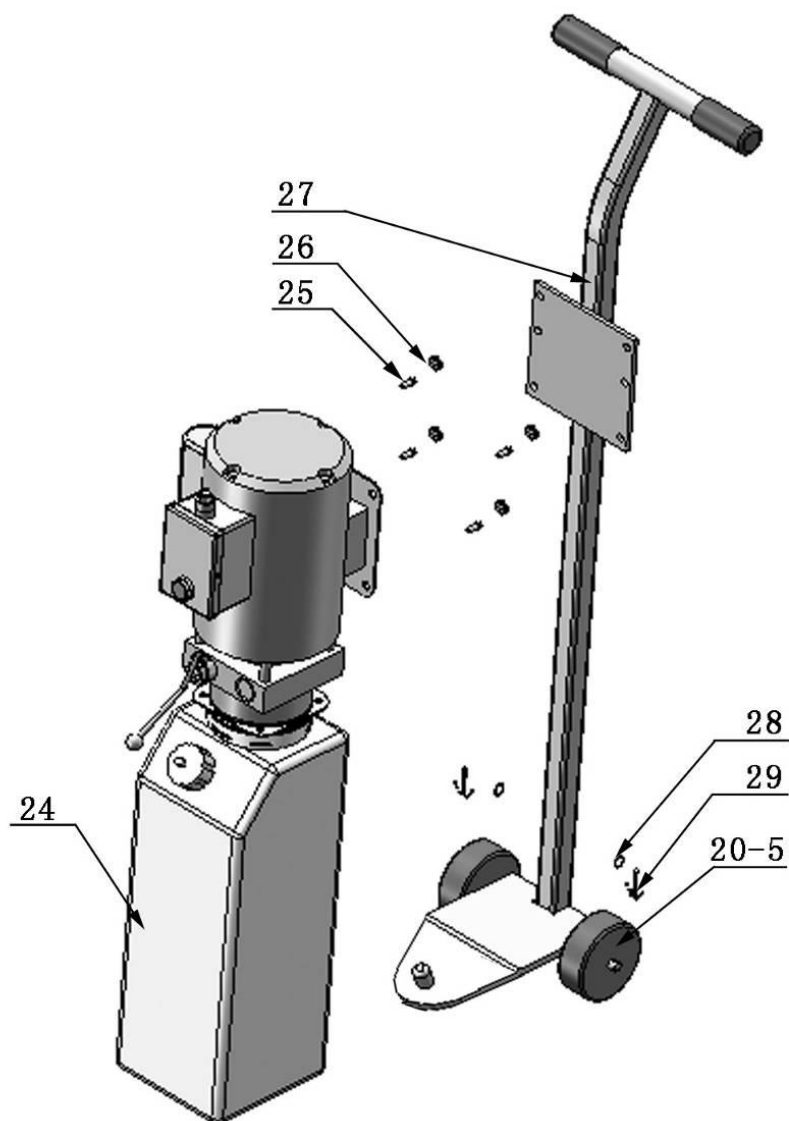


Fig. 6

C. Install fitting to power unit, and then connecting oil hose (See Fig.7).

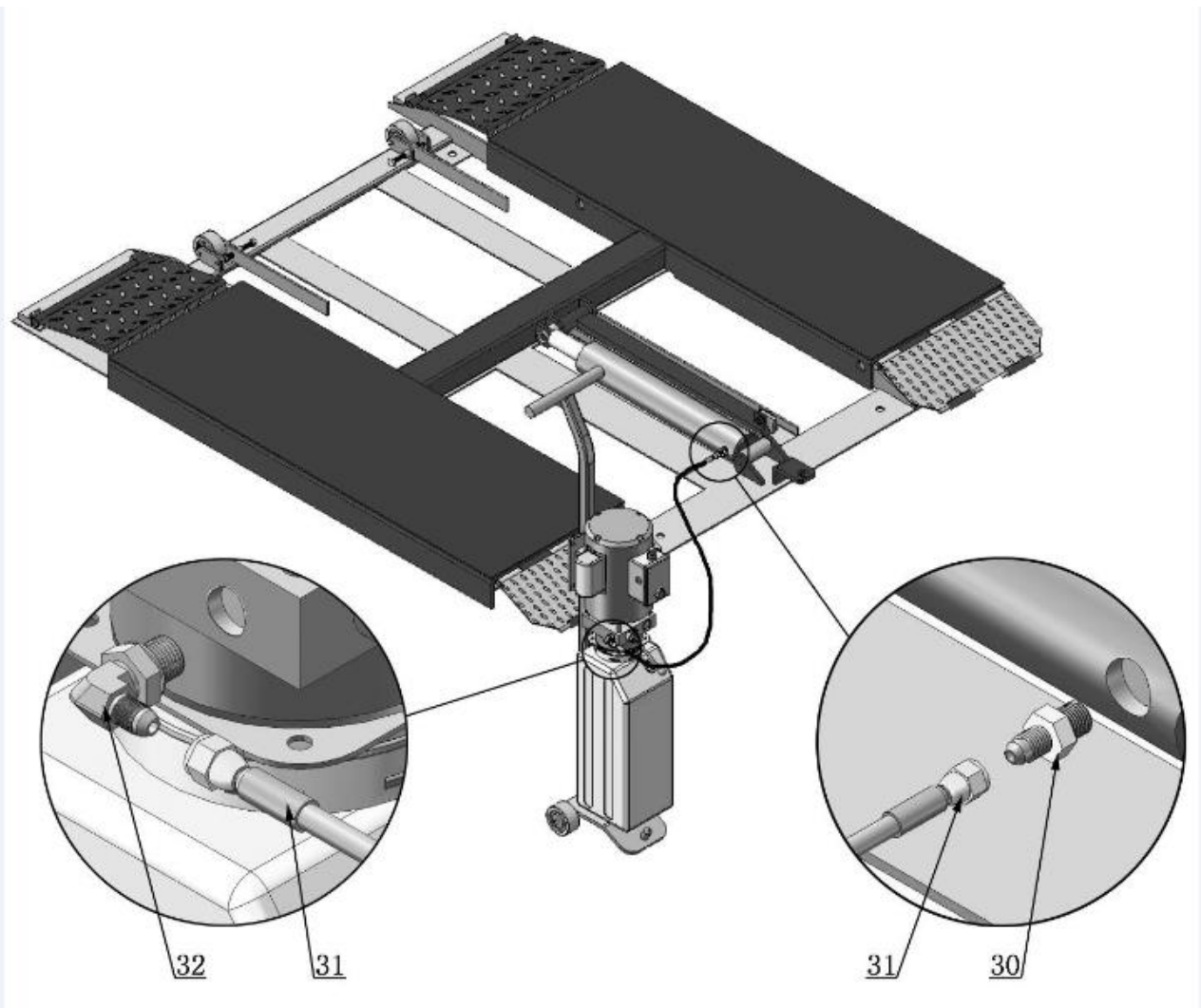


Fig. 7

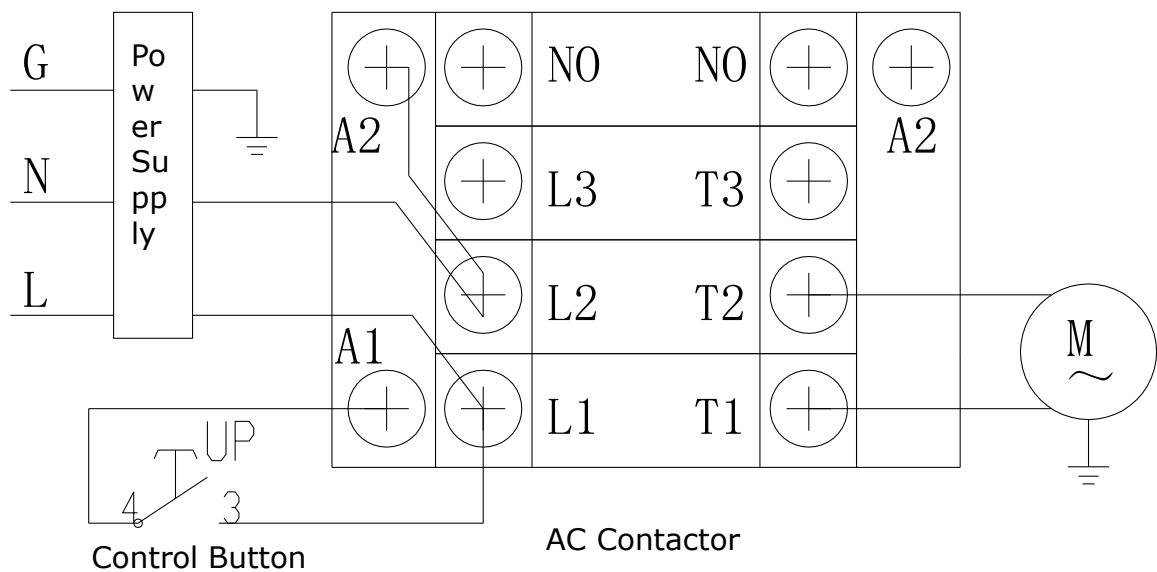
D. Install electrical system

Connect the power source on the data plate of power unit.

- Note:**
- 1. For the safety of operators, the power wiring must contact the floor well.**
 - 2. Pay attention to the direction of rotations when using three phases motors.**

Single phase motor (Fig.8)

1. Connecting the two power supply lines (fire wire **L** and zero wire **N**) to terminals of AC contactor marked **L1**, **L2** respectively.
2. Connecting the two motor wires to terminals of AC contactor marked **T1**, **T2**.
3. Connecting **L2** to **A2** of AC contactor.
4. Connecting two wires of control button to A.C. contactor terminals marked **A1**, **L1**.



Electric diagram

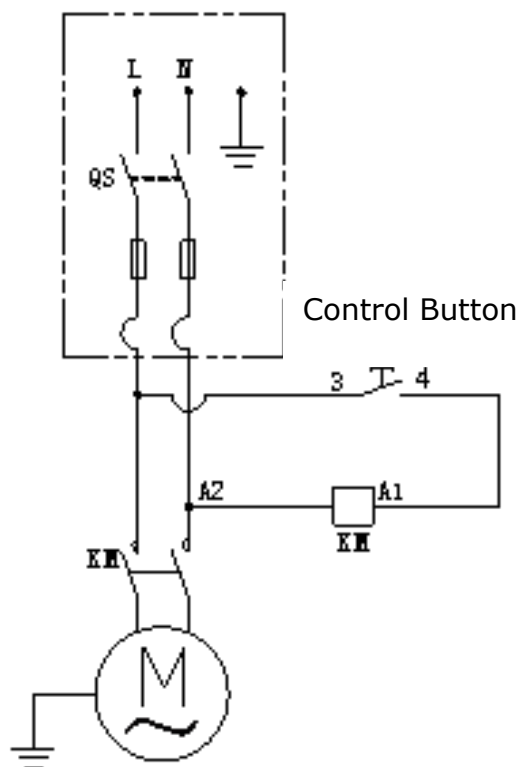


Fig.8

IV. EXPLODED VIEW

MODEL W-6PLR

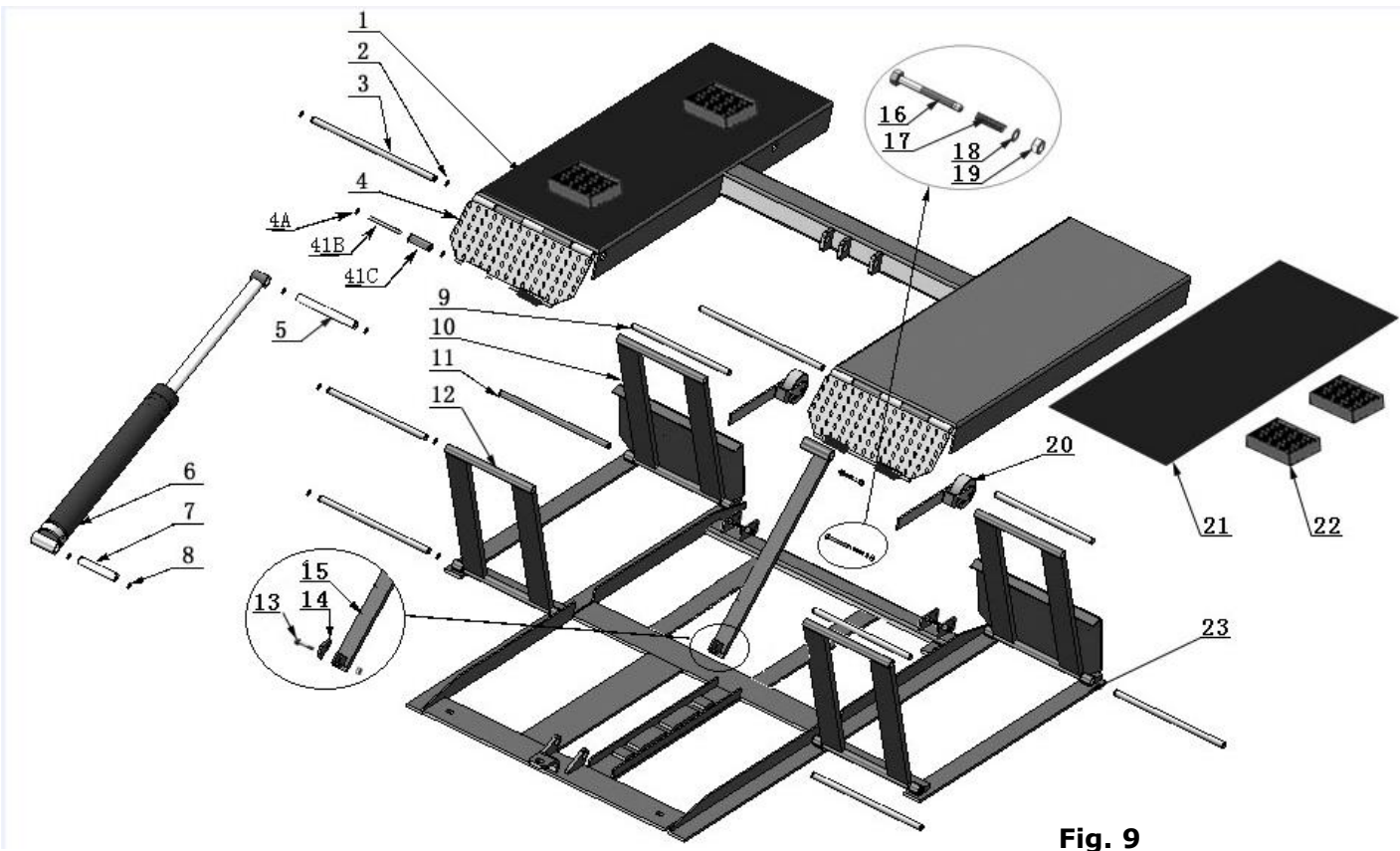


Fig. 9

Rollers

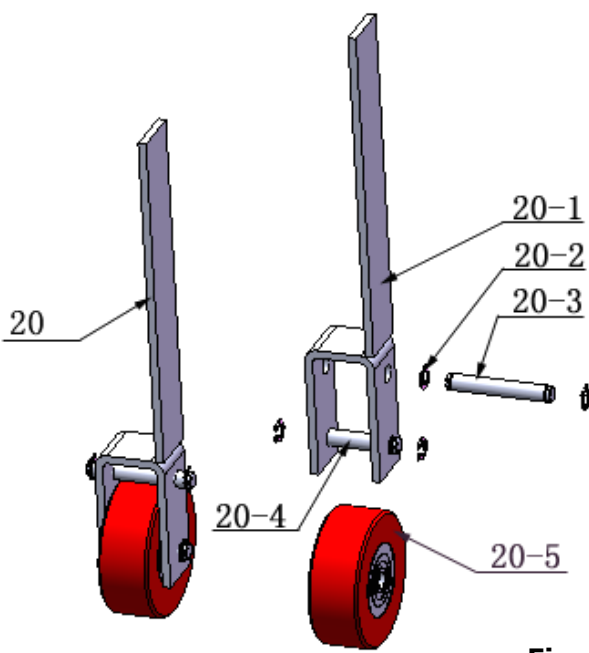


Fig. 10

PARTS LIST FOR MODEL W-6PLR

Item	Part#	Description	QTY.	Note
1	11630001	Platform	1	
2	10206019	Snap ring	20	
3	11630003	Pin for drive-thru ramp	2	
4	11630004	Drive-thru ramp	2	
4A	10209010	Snap Ring	8	
4B	11620043	Pin for roller of drive-in ramp	4	
4C	10620063	Roller of drive-pin ramp	4	
5	11630005	Connecting pin for cylinder	1	
6	10630006	Cylinder	1	
7	11630007	Cylinder base connecting pin	1	
8	10206032	Snap ring	4	
9	11630008	Frame support connecting pin (Upper)	4	
10	11630009	Frame support (Front)	2	
11	11630010	Frame support connecting pin (Lower)	4	
12	11630011	Frame support (Rear)	2	
13	10630100	Socket bolt	1	
14	11630013	Safety block	1	
15	11630014	Safety bar set	1	
16	10420020	Hex bolt	2	
17	10630015	Spring	2	
18	10209022	Washer	2	
19	10209056	Self Locking Nut.	3	
20	10640024	Rollers	2	
21	10630102	Rubber block	2	
22	10620034	Rubber pad	4	
23	11630012	Base frame	1	
24	81513008	Manual power unit	1	
25	10209003	Hex bolt	4	
26	10209005	Self Locking Nut	4	
27	10640021	Power unit stand	1	
28	10206006	Washer	2	
29	10420046	Split pin	2	
30	10209064	Straight Fitting	1	
31	10630101	Oil hose	1	
32	10209060	90° Fitting for power unit	1	
33	10630500	Parts Box	1	

PARTS FOR ROLLER

Item	Part#	Description	QTY.	Note
20-1	11630031	Rollers handle	2	
20-2	10630032	Snap Ring	8	
20-3	11630033	Connecting Shaft	2	
20-4	11630034	Roller Shaft	2	
20-5	10640023	Roller	4	

Cylinder

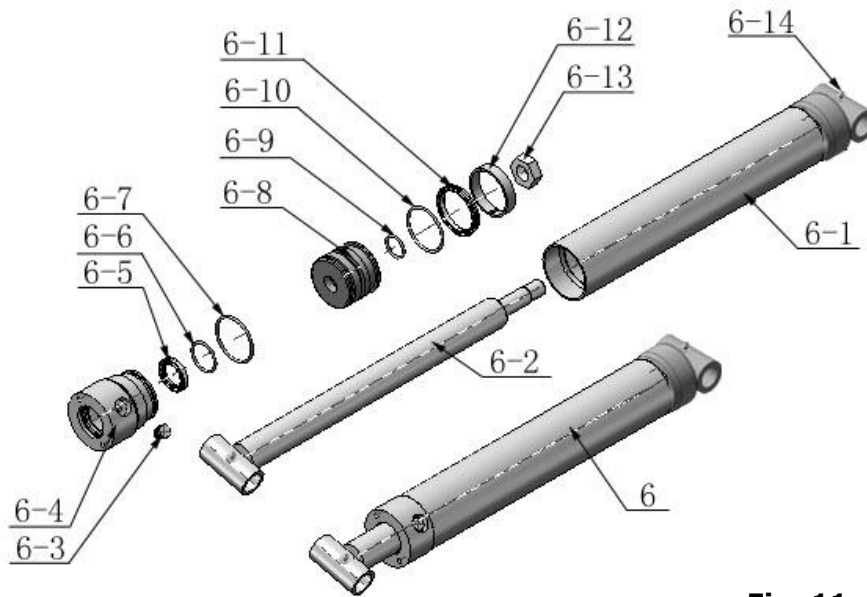
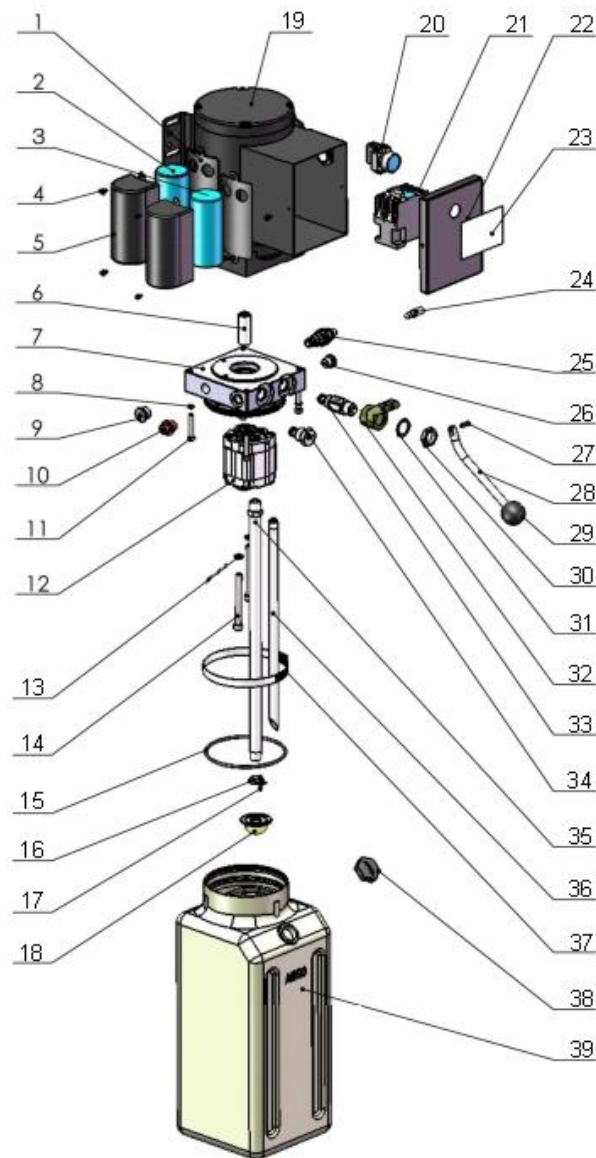


Fig. 11

Item	Part No.	Description	QTY.	Note
6-1	11630029	Bore Weldment	1	
6-2	11630026	Piston Rod	1	
6-3	10201034	Bleeding Plug	1	
6-4	11630030	Head cap	1	
6-5	10209078	Dust ring	1	
6-6	10620058	O - Ring	1	
6-7	10620049	O - Ring	1	
6-8	11630028	Piston	1	
6-9	10206069	O-Ring	1	
6-10	10630027	O-Ring	1	
6-11	10620054	Y-Ring	1	
6-12	10620055	Support Ring	1	
6-13	10206071	Nut	1	
6-14	10620064	Greasing Fitting	2	

Manual Power Unit (071103) Exploded View:



**110V/60HZ/1 Phase Manual
Fig. 12**

PARTS LIST FOR MANUAL POWER UNIT (071103)

ITEM	Part#	Description	QTY.	Note
1	81400180	Rubber pad	2	
2	81400130	Start capacitor	1	
3	81400088	Run capacitor	1	
4	10420148	Cup Head Bolt With Washer	4	
5	81400066	Cover of capacitor	2	
6	81400363	Motor connecting shaft	1	
7	81400362	Manifold block	1	
8	10209149	Lock Wash	4	
9	81400276	Iron Plug	1	
10	81400259	Red plastic plug	1	
11	85090142	Socket Bolt	4	
12	81400312	Gear pump	1	
13	10209034	Lock Washer	2	
14	81400295	Socket bolt	2	
15	81400365	O ring	1	
16	10209152	Tie	1	
17	85090167	Magnet	1	
18	81400290	Filter	1	
19	81400412	Motor	1	
20	10420070	Push button	1	
21	41030055	AC connector	1	
22	81400287	Cover of Motor Terminal Box	1	
23	71111182	Name plate	1	
24	81400560	Throttle valve	1	
25	81400266	Relief valve	1	
26	81400284	Iron Plug	1	
27	81400452	Pin	1	
28	81400451	Handle for release valve	1	
29	10209020	Plastic ball	1	
30	81400421	Nut for release valve	1	
31	81400422	Self-Locking Washer	1	
32	81400449	Valve seat(Low)	1	
33	81400567	Release valve	1	
34	81400566	Check valve	1	
35	81400375	Inlet pipe	1	
36	81400376	Oil return pipe	1	
37	81400364	Hose clamp	1	
38	81400263	Oil tank cap	1	
39	81400320	Oil tank	1	

Illustration of hydraulic valve for power unit

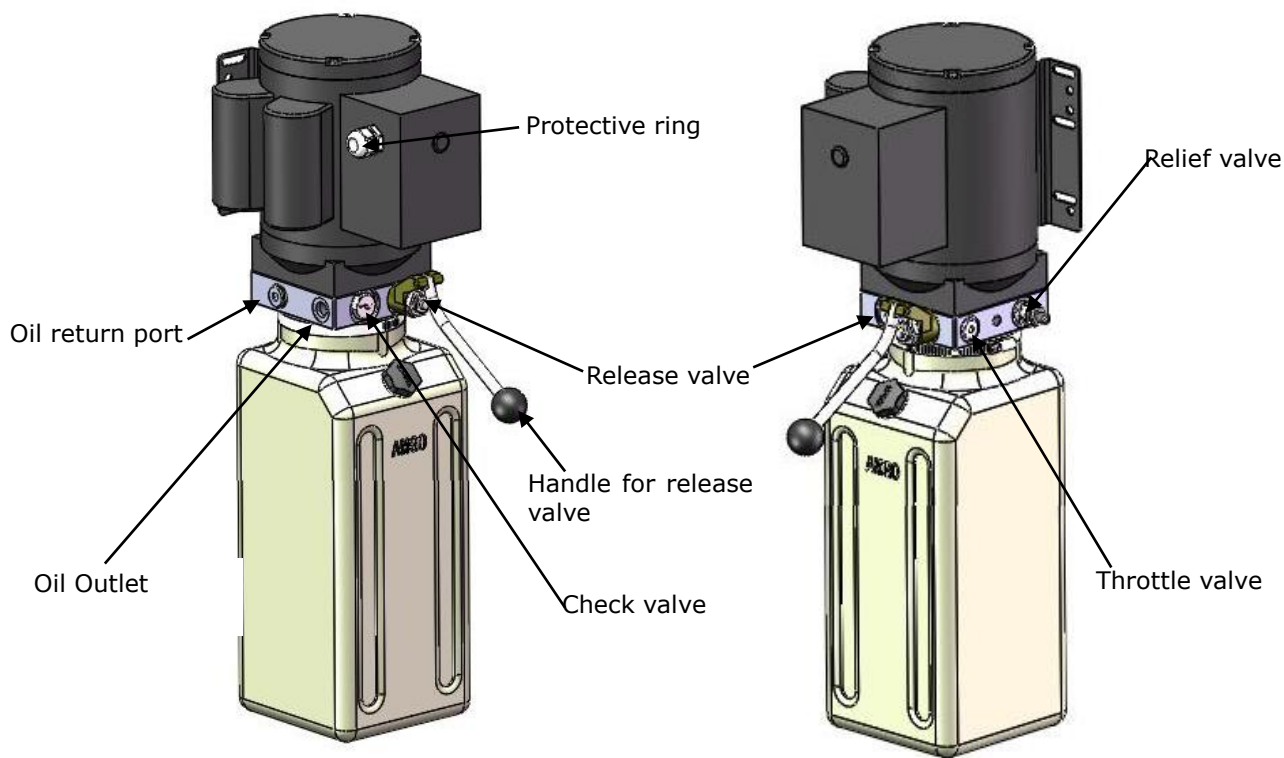


Fig. 13

V. OPERATION INSTRUCTIONS

1. Install the oil hose between oil cylinder and power unit, connect well the power supply wire. The machine can be ready to use.
2. The roller must be disengaging when lifting vehicle (**See Fig.16**). To raise and lock the lift: Press the button up till the lift is raised to the required height and the locks are in engaged (**See Fig.14**), then push release handle of the power unit, the lift would be locked.
3. To lower lift: Press the button UP, until the safety lock is in the released position (**See Fig.15**), lower lift by pushing lowering handle.

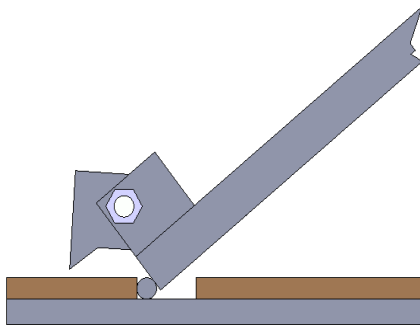


Fig.14

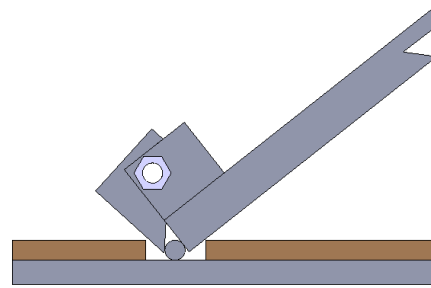


Fig.15

4. Move lift: Pull up roller bracket, lock two rollers to the lift with roller shaft. (**See Fig. 16 & 17**). Moving the lift by the power unit stand.

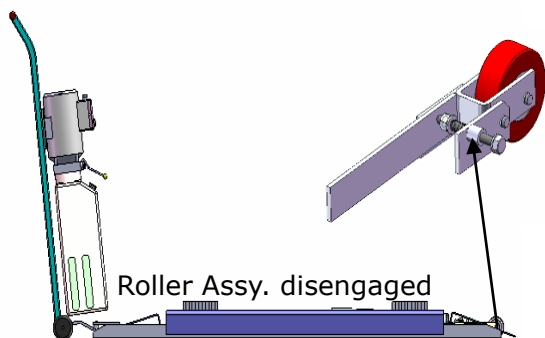


Fig. 16

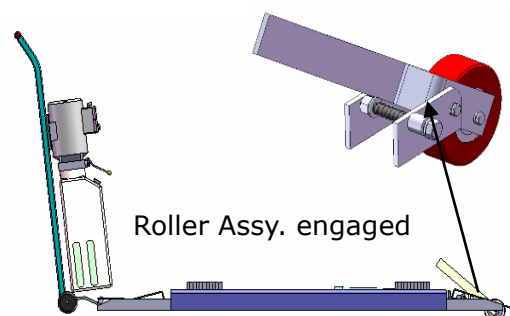


Fig. 17

5. There are four fixed holes in the machine, can fix the machine on ground by 3/4 X 4 3/4" anchor bolts (**See Fig.18**).

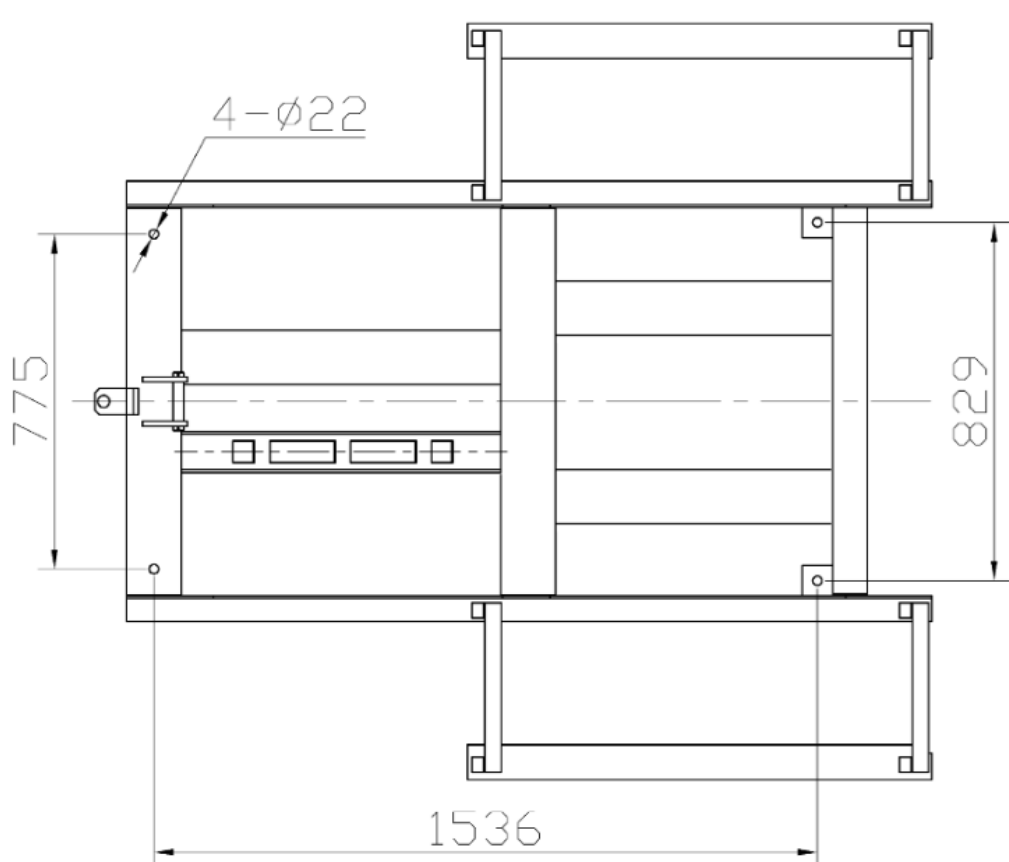


Fig.18

VI. MAINTENANCE SCHEDULE

Monthly:

1. Lubricate all moving parts with lubricant.
2. Check all connectors, bolts and pins to insure proper mounting.
3. Make a visual inspection of all hydraulic hoses/lines for possible wear or leakage.

Every six months:

1. Make a visual inspection of all moving parts for possible wear, interference or damage.
2. Check all fastener and re-torque.

VII. TROUBLE SHOOTING

TROUBLE	CAUSE	REMEDY
Motor does not run	<ol style="list-style-type: none">1. Button does not work2. Wiring connections are not in good condition3. Motor burned out4. AC contactor burned out	<ol style="list-style-type: none">1. Replace button2. Repair all wiring connections3. Repair or replace motor4. Replace AC Contactor
Motor runs but the lift is not raised	<ol style="list-style-type: none">1. Motor runs in reverse rotation2. Gear Pump out of operation3. Release Valve in damage4. Relief Valve or Check Valve in damage5. Low oil level6. Overload or system low pressure	<ol style="list-style-type: none">1. Reverse two power wire2. Repair or replace3. Repair or replace4. Repair or replace5. Fill tank6. Check load or adjusting the pressure of hydraulic system
Lift does not stay up	<ol style="list-style-type: none">1. Release Valve out of work2. Relief Valve or Check Valve leakage3. Cylinder or Fittings leaks	Repair or replace
Lift raises slowly	<ol style="list-style-type: none">1. Oil line is jammed2. Motor running on low voltage3. Oil mixed with air4. Gear Pump leaks5. Overload lifting	<ol style="list-style-type: none">1. Clean the oil line2. Check electrical system3. Fill tank4. Repair or replace pump5. Check load
Lift can not lower	<ol style="list-style-type: none">1. Safety device are in activated2. Release valve in damage3. Oil system is jammed	<ol style="list-style-type: none">1. Release the safeties2. Repair or replace3. Replace Clean the oil system

VIII. Lift disposal.

When the car lift cannot meet the requirements for normal use and needs to be disposed, it should follow local laws and regulations.

