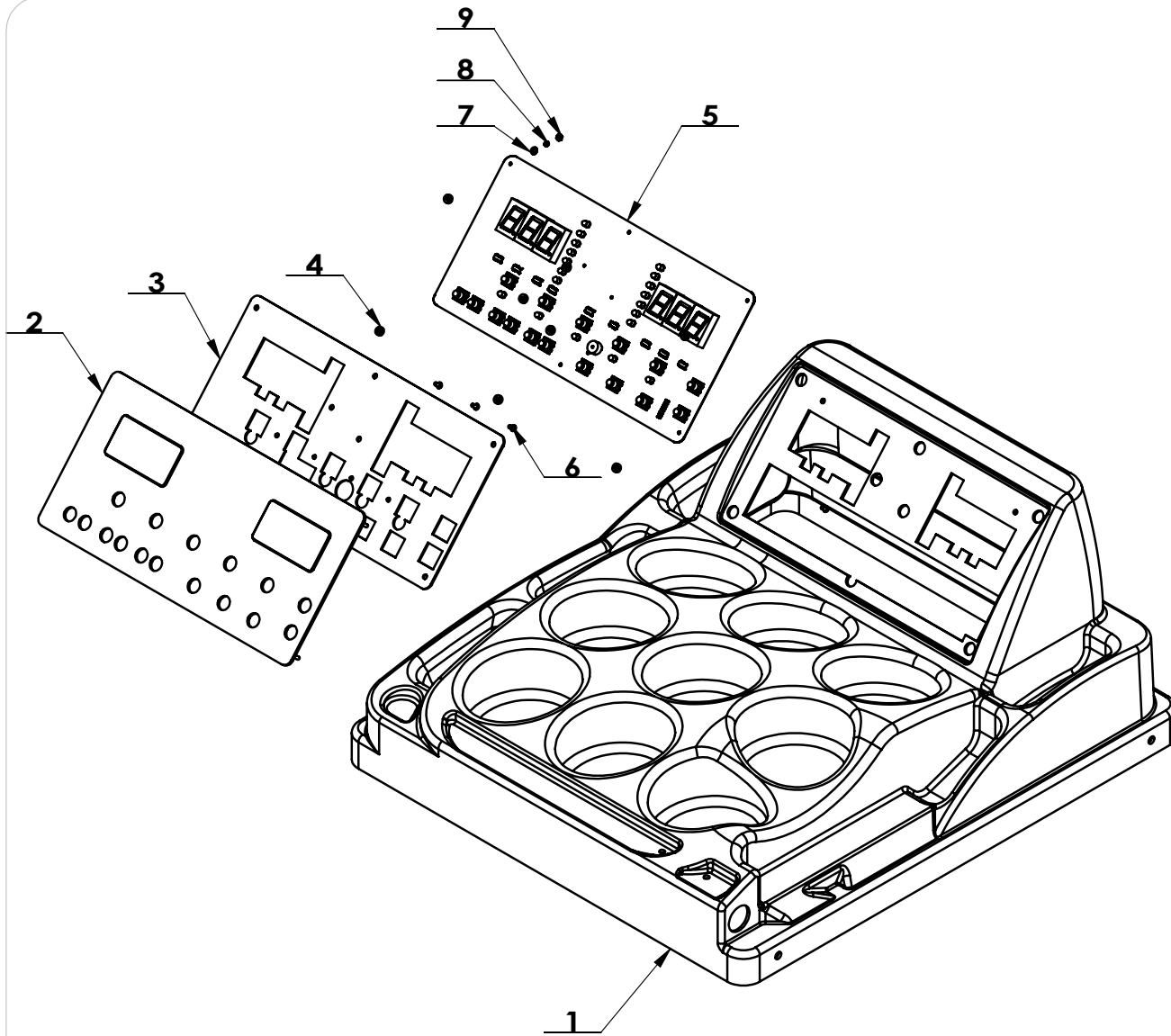
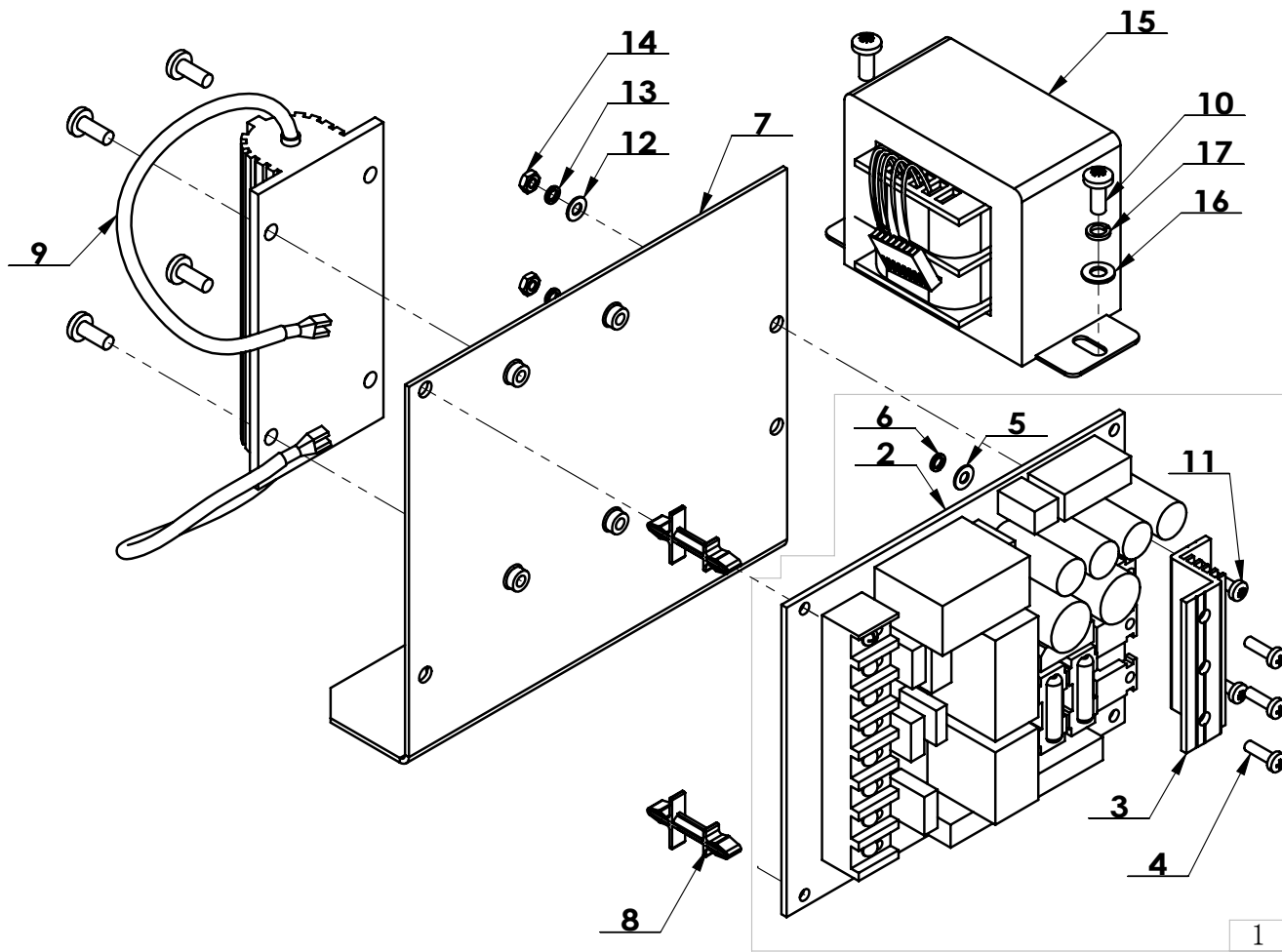


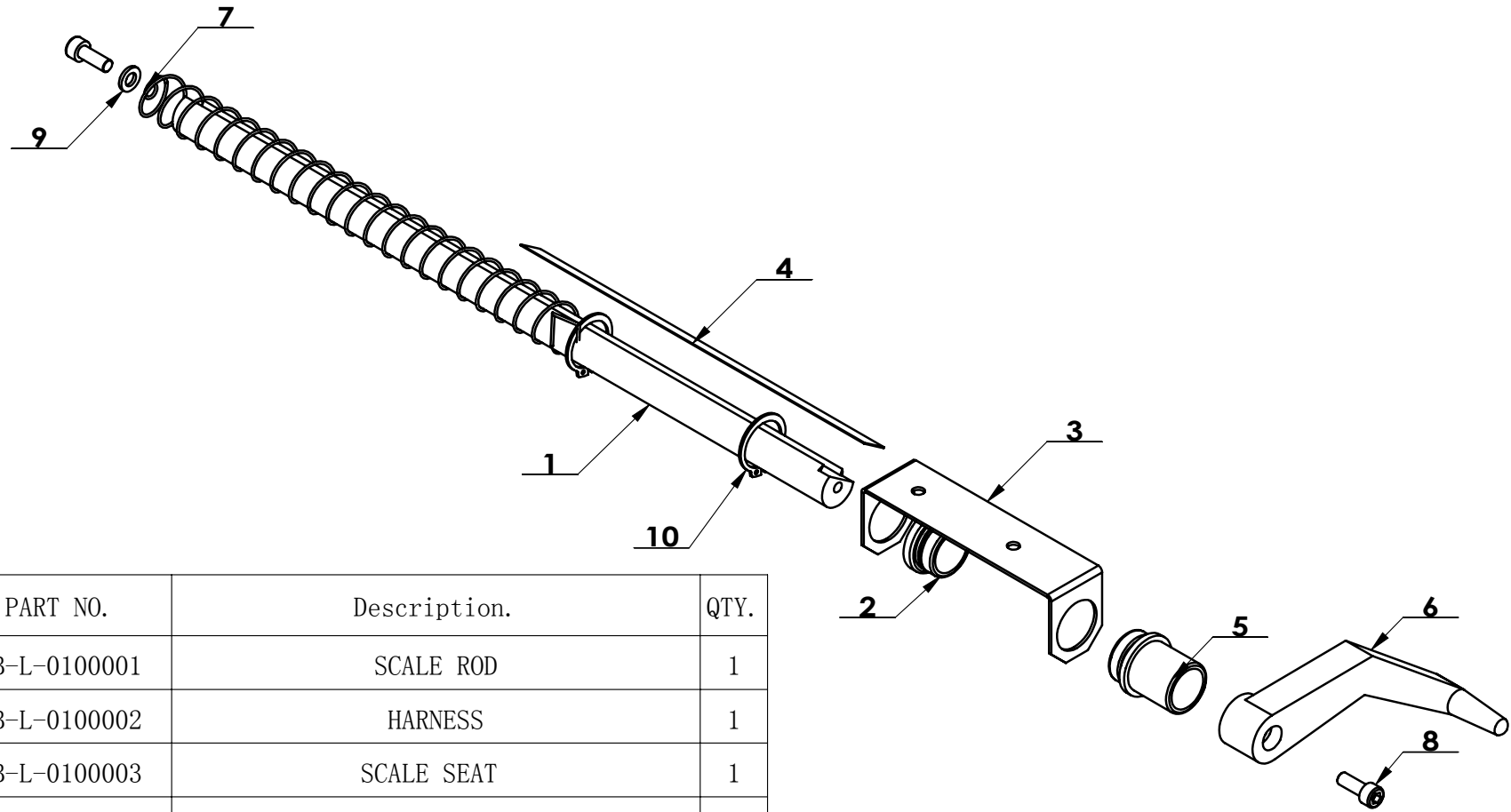
ITEM	PART NO.	Description.	QTY.
1	B-12-1100000	BODY WELD ASSY	1
2	TB-E-1210000	POWER BOARD	1
3	TB-F-0100000	HOOD ASSY	1
4	TB-P-0100000	BALANCING SHAFT ASSEMBLY	1
5	B-12-1210000	WEIGHT TRAY	1
6	TB-L-0100000	SCALE ASSEMBLY	1
7	B-01-1000100	MOTOR SEAT	1
8	B-01-1000005	FRONT RETAINING PLATE	1
9	TB-E-9000220	MOTOR	1
10	B-53-1000003	MOTOR BELT PULLEY	1
11	GB1096-5×5×20	COMMON FLAT KEY	1
12	B-12-1000001	COMPUTER MAINBOARD	1
13	TB-E-1211002	PLASTIC CLIPPER	4
14	GB5781-M8×20	HEXANGULAR BOLT	4
15	GB93-8	STANDARD SPRING WASHER	4
16	GB95-8	FLAT WASHER	4
17	TB-E-1000101	POWER CABLE	1
18	GB818-M5×12-H	CROSS PANHEAD SCREW	6
19	TB-S-0100000	ACCESSORY BOX	1
20	TB-S-0100006	ACCESSORY BOX	1
21	TB-F-0130000	CONNECTING PLATE	1
22	GB818-M5×8-H	CROSS PANHEAD SCREW	2
23	TB-S-0100009	CONE HANG HANDLE	2
24	TB-E-1001101	POWER SWITCH	1
25	GB70.1-M10×25	INNER HEXA CYLINDRICALSCREW	4
26	GB93-10	STANDARD SPRING WASHER	4
27	GB95-10	FLAT WASHER	4
28	GB70.1-M6×16	INNER HEXA CYLINDRICAL SCREW	6
29	B-12-1008001	SWITCH CONNECTION LINE	1
30	B-12-1008002	MAINBOARD CABLE	1
31	B-12-1008003	DISPLAY CABLE	1
32	B-12-1008004	CABLE	1
33	B-12-1008005	STEEL CORD	1
34	B-01-1000006	WEDGE BELT (940mm)	1
35	GB93-6	STANDARD SPRING WASHER	4
36	GB95-6	FLAT WASHER	4



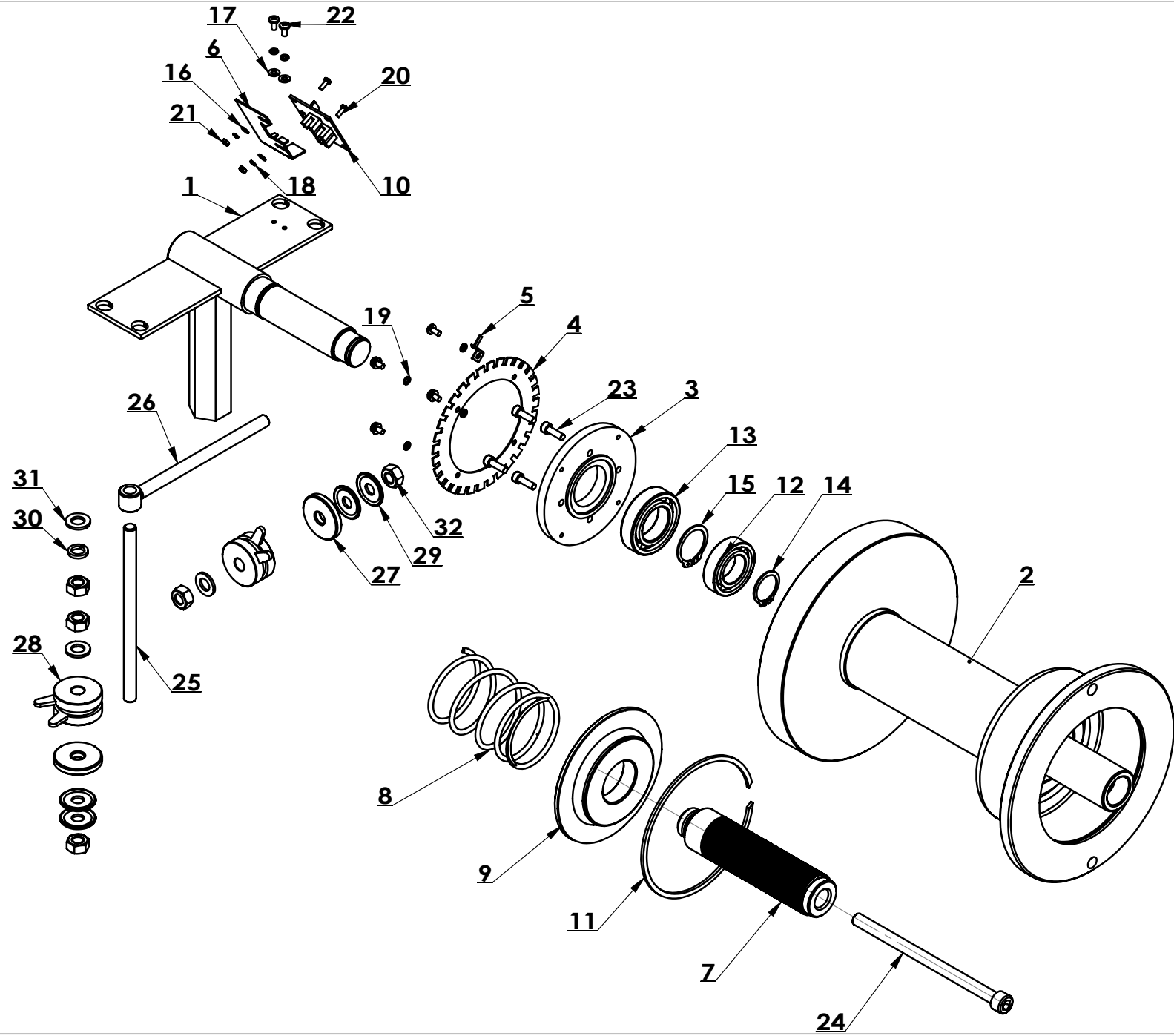
ITEM	PART NO	Description.	QTY.
1	B-12-1210001	WEIGHT TRAY	1
2	CB910G. 00. 01. 0 2	IMD PANEL	1
3	B-12-1210004	CUSHION PLATE	1
4	B-12-1210005	WASHER	8
5	B-12-1210002	DISPLAY PANEL	1
6	GB950-M3×8	CROSS ROUND HEAD WOOD SCREW	4
7	GB95-3	FLAT WASHER	8
8	GB93-3	STANDARD SPRING WASHER	8
9	GB6170-M3	HEXANGULAR NUT 1-TYPE	8



ITEM	PART NO.	Description.	QTY.
1	TB-E-1211100	POWER BOARD	1
2	TB-E-1211101	POWER SUPPLY BOARD	1
3	TB-E-1211102	COOLING PLATE	1
4	GB818-M3×10-H	CROSS PANHEAD SCREW	3
5	GB97.1-3	FLAT WASHER A GRADE	3
6	GB93-3	STANDARD SPRING WASHER	3
7	TB-E-1211001	SUPPORT PLATE	1
8	TB-E-1211002	PLASTIC CLIPPER	2
9	TB-E-1211210	UNIVERSAL RESISTOR	1
10	GB818-M4×10-Z	CROSS PANHEAD SCREW	8
11	GB818-M3×8-Z	CROSS PANHEAD SCREW	2
12	GB95-3	FLAT WASHER	2
13	GB93-3	STANDARD SPRING WASHER	2
14	GB6170-M3	HEXANGULAR NUT 1-TYPE	2
15	TB-E-1008220	TRANSFORMER	1
16	GB95-4	FLAT WASHER	4
17	GB93-4	STANDARD SPRING WASHER	4

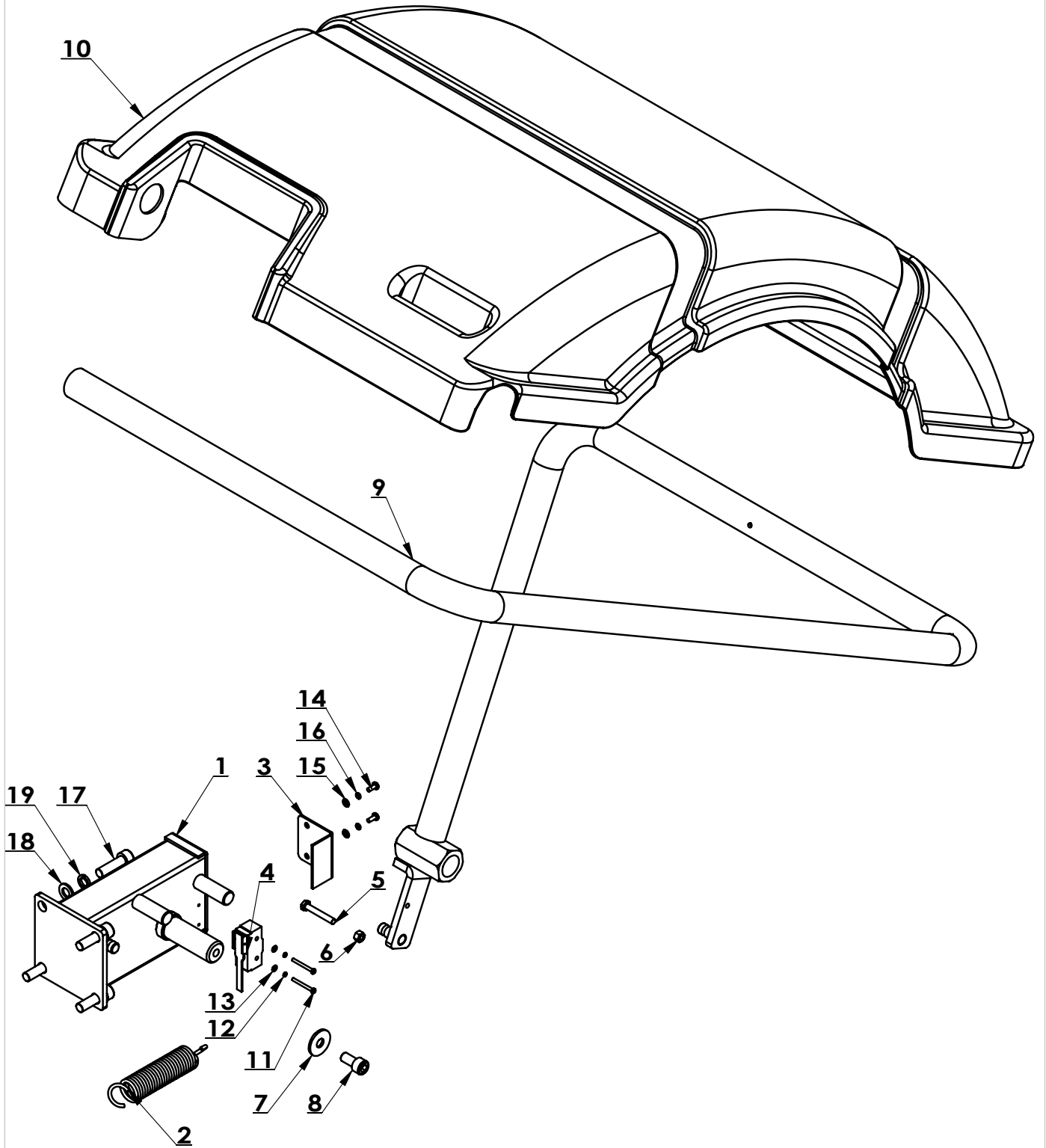


ITEM	PART NO.	Description.	QTY.
1	TB-L-0100001	SCALE ROD	1
2	TB-L-0100002	HARNESS	1
3	TB-L-0100003	SCALE SEAT	1
4	TB-L-0100004	SCALE	1
5	TB-L-0100005	HARNESS	1
6	TB-L-0100006	SCALE HANDLE	1
7	TB-L-0100007	SPRING	1
8	GB70.1-M6×16	INNER HEXA CYLINDRICAL SCREW	2
9	GB95-6	FLAT WASHER	1
10	GB894.1-25	SHAFT ELATIC BIG RETAINING RING A-TYPE	2

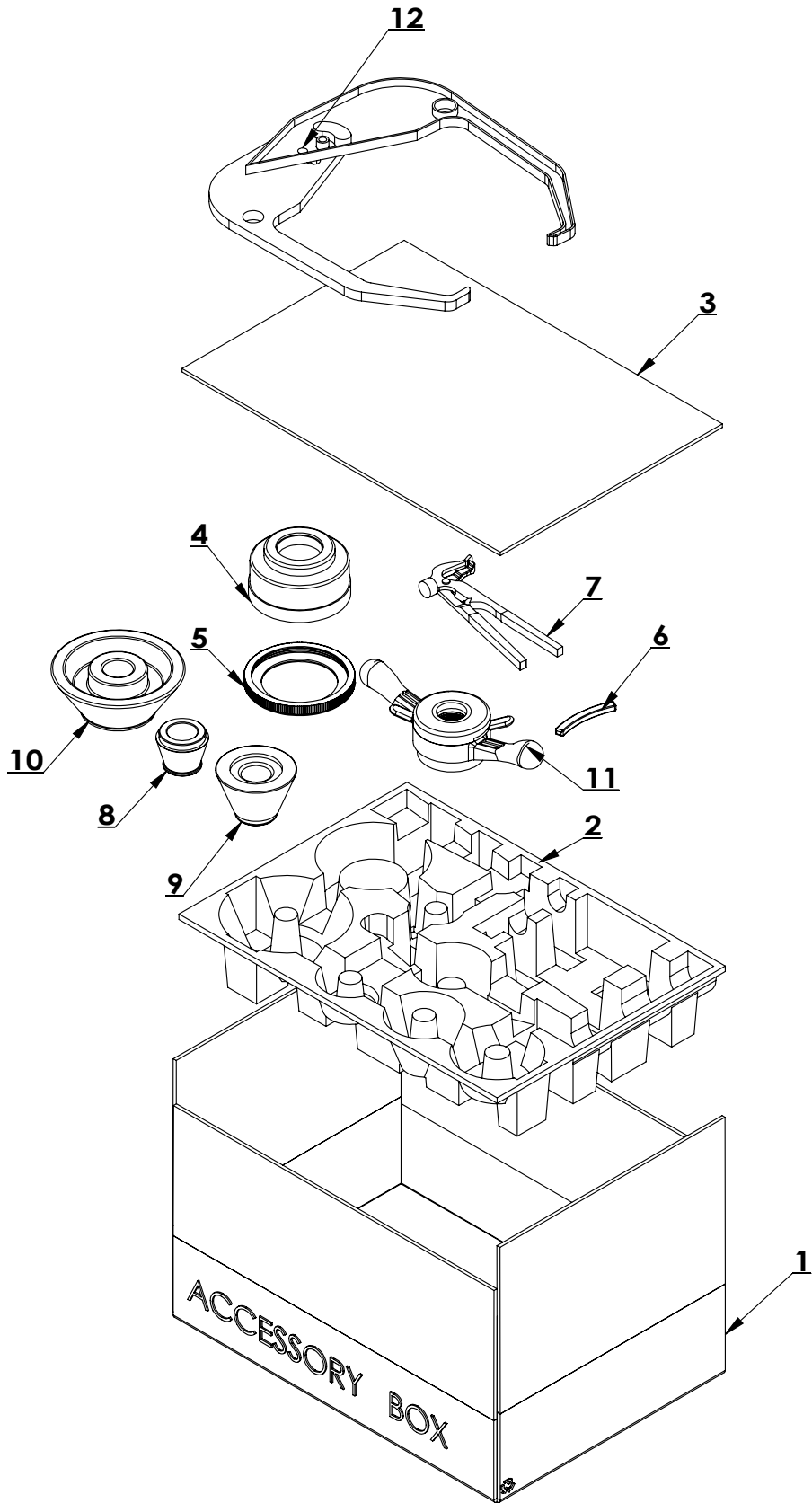


ITEM	PART NO.	Description.	QTY.
1	TB-P-0101000	FIXING SHAFT WELDING	1
2	TB-P-0102000	BALANCING SHAFT	1
3	TB-P-0100001	BEARING PRESS HOUSING	1
4	TB-P-0100002	PHOTOELECTRIC SET	1
5	TB-P-0100003	PHOTOELECTRIC TOOTH	1
6	TB-P-0100004	PHOTOELECTRIC CELL PLATE	1
7	TB-P-0100007	LEADING SCREW	1
8	TB-P-0300007	BALANCING SHAFT PRESS SPRING	1
9	TB-P-0100010	SPRING PRESS COVER	1
10	TB-P-0100011	ANGLE SENSOR	1
11	TB-P-0300009	COLLAR	1
12	GB276-6005	DEEP GROOVE BALL BEARINGS	1
13	GB276-6006	DEEP GROOVE BALL BEARINGS	1
14	GB894. 2-25	SHAFT ELATIC RETAINING RING B-TYPE	1
15	GB894. 2-30	SHAFT ELATIC RETAINING RING B-TYPE	1
16	GB95-3	FLAT WASHER	2
17	GB95-4	FLAT WASHER	5
18	GB93-3	STANDARD SPRING WASHER	2
19	GB93-4	STANDARD SPRING WASHER	6
20	GB818-M3×8-H	CROSS PANHEAD SCREW	2
21	GB6170-M3	HEXANGULAR NUT 1-TYPE	2
22	GB818-M4×8-H	CROSS PANHEAD SCREW	6
23	GB70. 1-M5×16	INNER HEXA CYLINDRICAL SCREW	4
24	GB70. 1-M10×160	INNER HEXA CYLINDRICAL SCREW	1
25	TB-P-0100006	FULL BOTTON SCREW	1
26	TB-P-0103000	FLYING RINGS SCREW	1
27	TB-P-0100005	PRESSING WASHER	2
28	TB-P-0100021	SENSOR	2
29	TB-P-0103003	DISK ELASTIC WASHER	4
30	GB93-10	STANDARD SPRING WASHER	1
31	GB95-10	FLAT WASHER	3
32	GB6170-M10	HEXANGULAR NUT 1-TYPE	5

TB-F-0100000



ITEM	PART NO.	Description.	QTY.
1	TB-F-0110000	PROTECTIVE	1
2	TB-F-0100001	SUPPORT	1
3	TB-F-0100002	PROTECTIVE	1
4	TB-F-0100004	STPOKE SWITCH	1
5	GB5781-M6×40	HEXANGULAR	1
6	GB41-M6	HEXANGULAR	1
7	GB96. 1-10	LARGE	1
8	GB70. 1-M10×20	INNER HEXA	1
9	TB-F-0120000	PROTECTIVE	1
10	TB-F-0100003	NEW STYLE HOOD	1
11	GB818-M3×30-H	CROSS	2
12	GB93-3	STANDARD	2
13	GB95-3	FLAT WASHER	2
14	GB818-M4×10-H	CROSS	2
15	GB95-4	FLAT WASHER	2
16	GB93-4	STANDARD	2
17	GB70. 1-M10×35	INNER HEXA	4
18	GB95-10	FLAT WASHER	4
19	GB93-10	STANDARD	4



ITEM	PART NO.	Description.	QTY.
1	TB-S-0100006	ACCESSORY BOX	1
2	TB-S-0100007	ACCESSORY BOX	1
3	TB-S-0100008	SPACE	1
4	TB-S-0100001	BOWL	1
5	TB-S-0100002	BOWL EDGE	1
6	TB-S-0100003	WEIGHT (100g)	1
7	TB-S-0100005	BALANCE HAMMAR	1
8	TB-P-0100012	SMALLI CONE	1
9	TB-P-0100013	MIDDLE CONE	1
10	TB-P-0100014	LARGE CONE	1
11	TB-K-0100000	QUICK NUT (Φ 36)	1
12	TB-S-0100100	CALIPER ASSEMBLY	1