

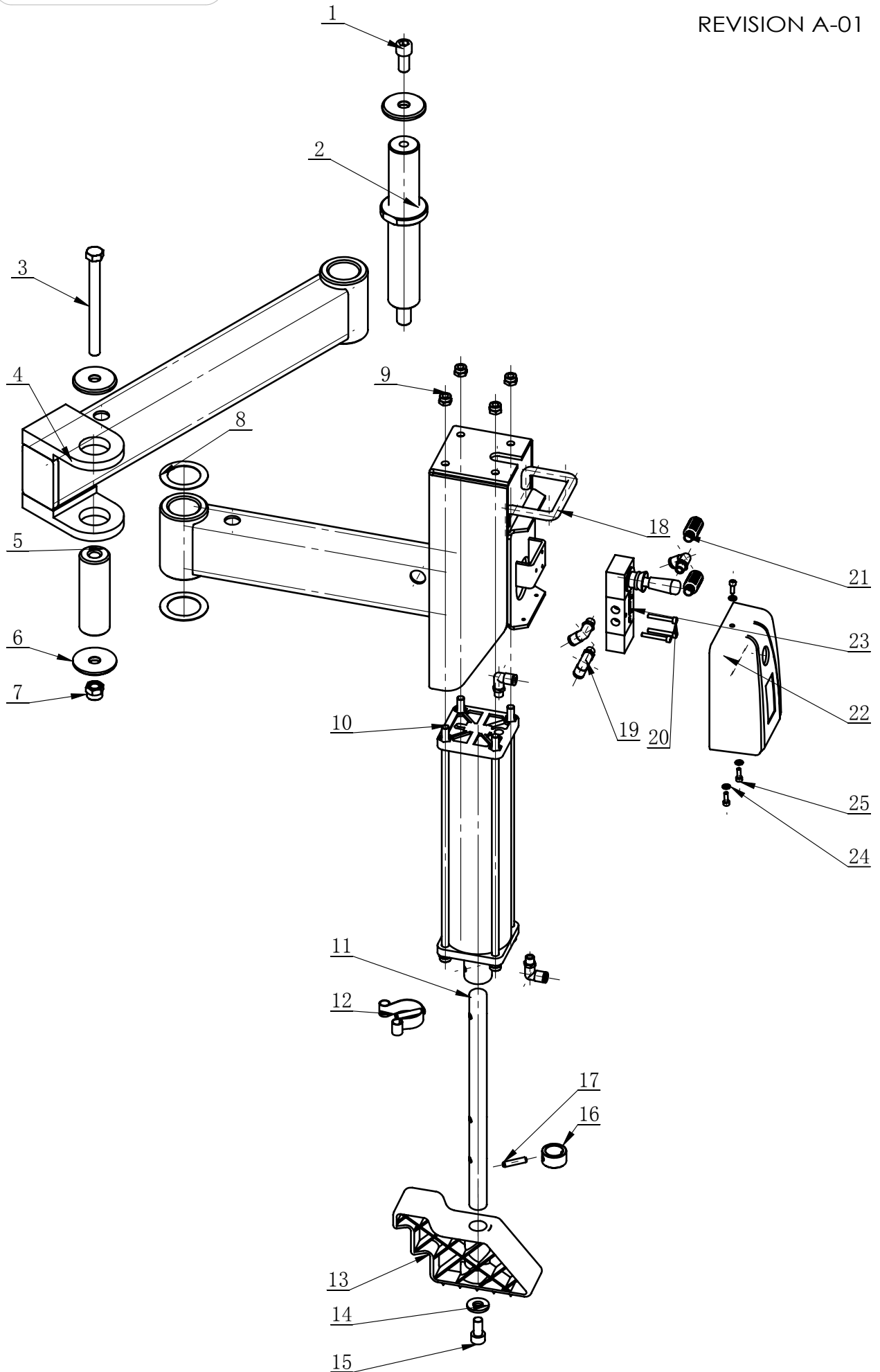


**WEAVER**

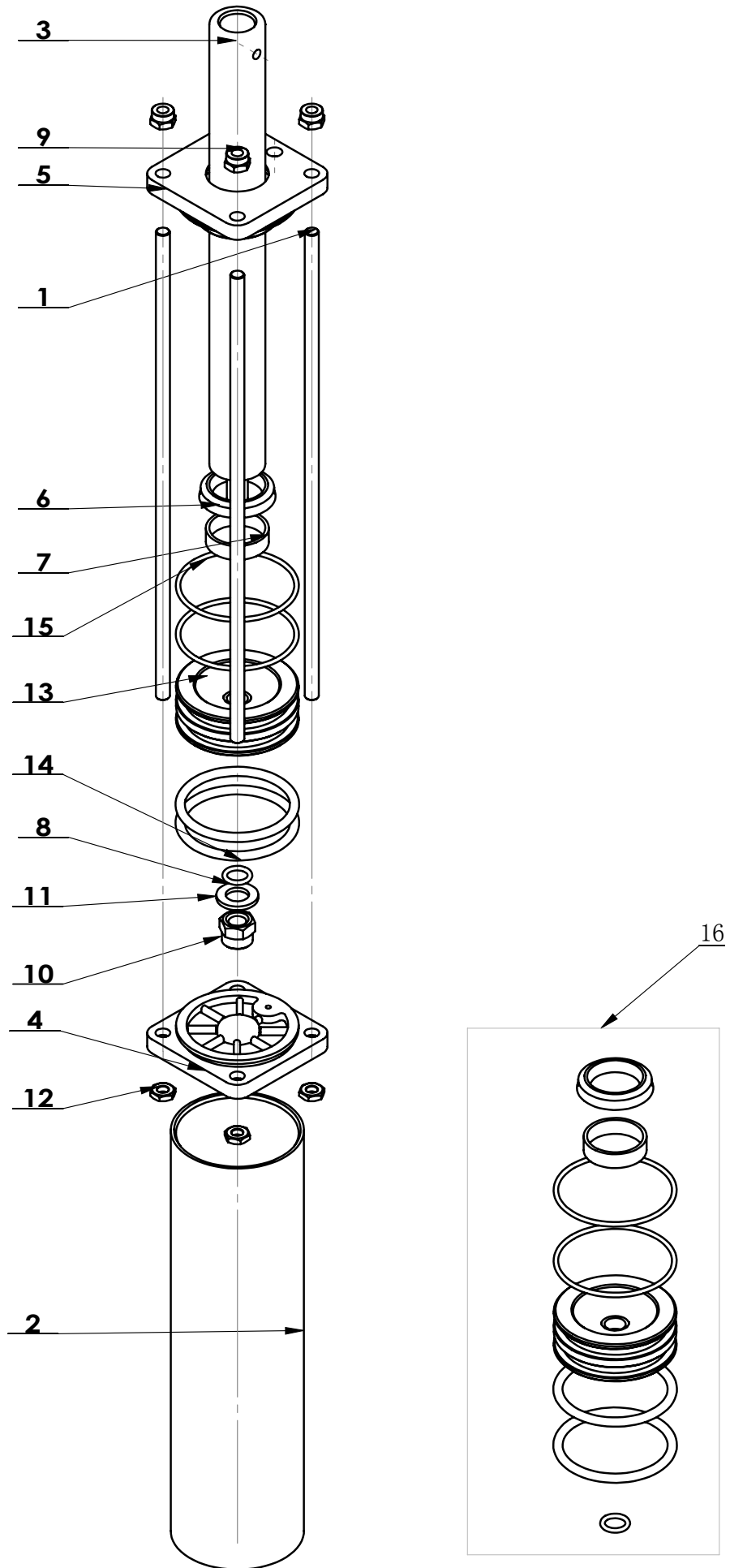
E Q U I P M E N T

**W-PL230 Assist Arm Parts**

Please read this manual before operation



ITEM	PART. NO	DESCRIPTION	QT. Y
1	GB70. 1-M12×25	INNER HEXA CYLINDRICAL SCREW	1
2	H-70-1000001	ROCKER VERTICAL SHAFT	1
3	GB5782-M12×135	HEXANGULAR BOLT	1
4	H-70-1100000	SWING ARM WELDING	1
5	C-A1-1E00001	SHAFT	1
6	TC-10-1300002	CIRCULAR GUIDERAIL WAHER	3
7	GB889. 1-M12	1-TYPE PREVAILING TORQUE TYPE HEXAGON LOCK NUT	1
8	C-54-1300013	ADJUSTING WASHER	2
9	GB889. 1-M8	1-TYPE PREVAILING TORQUE TYPE HEXAGON LOCK NUT	4
10	C-A1-1E40000	TURNTABLE SHAFT ASSEMBLY	1
11	H-70-1000002	PRESS SHAFT	1
12	C-A1-1E30000	ADJUSTMENT PIN ASSEMBLY	1
13	H-10-1000006	PRESS BLOCK	1
14	H-10-1000007	WASHER	1
15	GB70. 1-M10×20	INNER HEXA CYLINDRICAL SCREW	1
16	C-A1-1E00005	SLEEVE	1
17	GB879. 1-6×28	ELASTIC CYLINDRICAL PIN, HEAVY	1
18	H-70-1200000	PRESS ARM WELDING	1
19	FPL 6-01	MALE ELBOW	5
20	GB70. 1-M4×30	INNER HEXA CYLINDRICAL SCREW	3
21	FSK 01	PLASTIC PARTICLE SILENCER	2
22	H-10-1000026	MANUAL VALVE COVER	1
23	H-20-1000035	CONTROL VALVE	1
24	GB95-4	FLAT WASHER	3
25	GB70. 1-M4×12	INNER HEXA CYLINDRICAL SCREW	3



ITEM	PART. NO	DESCRIPTION	QT. Y
1	C-A1-1E40001	SCREW	4
2	C-A1-1E40002	CYLINDER HOUSING	1
3	C-A1-1E40003	PISTON ROD	1
4	C-A1-1E40004	CAP-BASE, CYLNR	1
5	C-A1-1E40005	THE FRONT COVER	1
6	C-A1-1E40006	DUST RING	1
7	C-A1-1E40007	WEAR RING	1
8	GB3452. 1-11. 8×2. 65-A	HYDRAULIC-PNEUMATIC RUBBER O-RING A TYPE	1
9	GB889. 1-M8	1-TYPE PREVAILING TORQUE TYPE HEXAGON LOCK NUT	4
10	GB889. 1-M12	1-TYPE PREVAILING TORQUE TYPE HEXAGON LOCK NUT	1
11	GB95-12	FLAT WASHER	1
12	GB6172. 1-M8	HEXANGULAR THIN NUT	4
13	C-A1-1E40008	PISTON	1
14	GB3452. 1-60×5. 3-G	HYDRAULIC-PNEUMATIC RUBBER O-RING G TYPE	2
15	GB3452. 1-65×2. 65-G	HYDRAULIC-PNEUMATIC RUBBER O-RING G TYPE	2
16	预埋件	SEAL	1