



WEAVER
E Q U I P M E N T

W-8 Rolling Jack

Please read this manual before operation

I . FEATURE AND SPECIFICATIONS

1. W-8 features:

- Safety self-lock mechanism
- Convenient for use.
- Can be used separately or match with lifts(four post, PX scissors, etc.)
- Adjustable adaptors assy.

2. W-8. This Jack is designed match with air pump.



SPECIFICATIONS

Model	Lifting capacity	Lifting height	Lifting times	Overall length	Overall width	Min. height	G.W.	Air source (Mpa)
W-8	3.5T	500mm	50s	1004mm	578mm	255mm	kg	0.4~0.6

II. Installation

1. Jack can start to work after connecting the pump.

1.1 W-8 is connected with the air pump(Fig.1)

Note: Connect the air line fitting of the air pump with air source, air pressure must be at 0.4-.06 MPA.

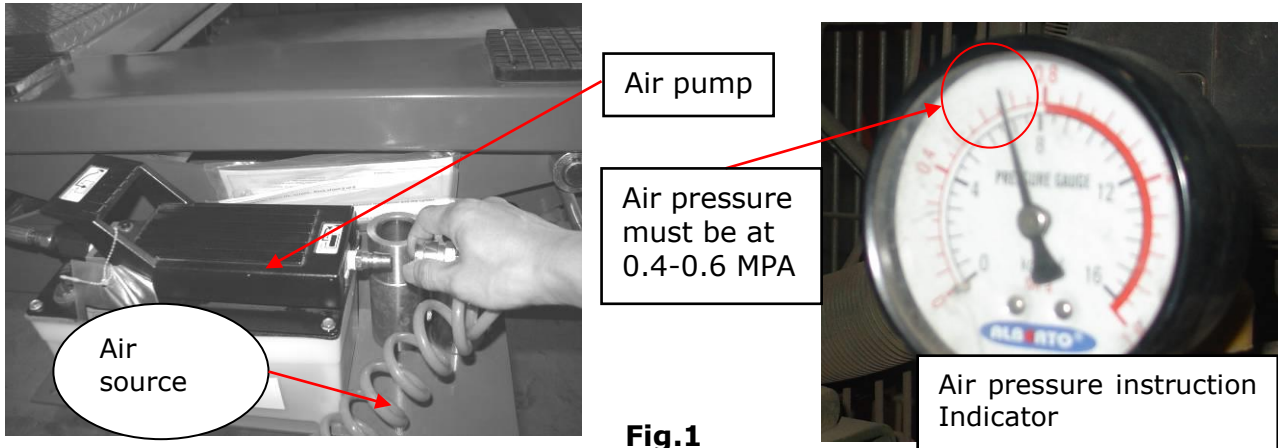


Fig.1

2. Lift vehicles: choose the suitable adapters(Fig. 3); Extend the upper extension to proper length to fit the lifting point of the vehicle(Fig. 4); Fill air into the oil pump (Fig.5); Raise the Jack and lock the Jack in the safety lock(Fig. 6)

Rubber pad assy. 6" adapter 3" adapter

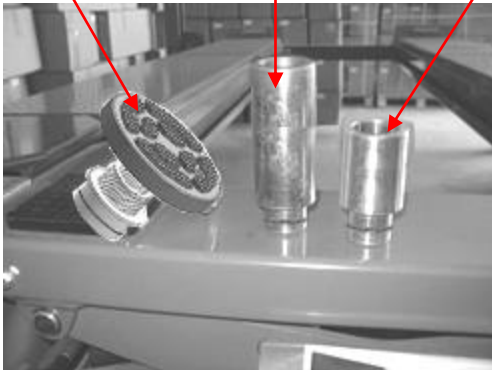


Fig.3

Upper Extension (Left) Upper Extension (Right)

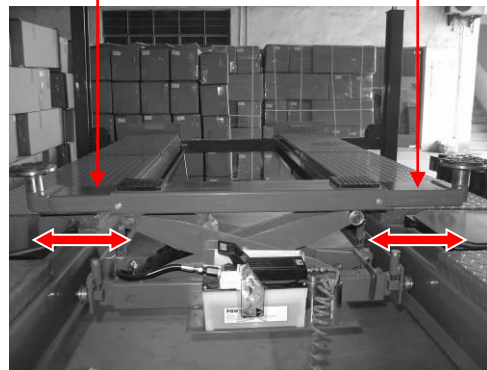


Fig. 4

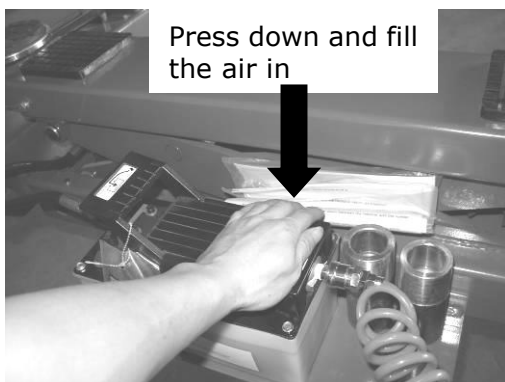


Fig.5

Way for J8A to fill the air in

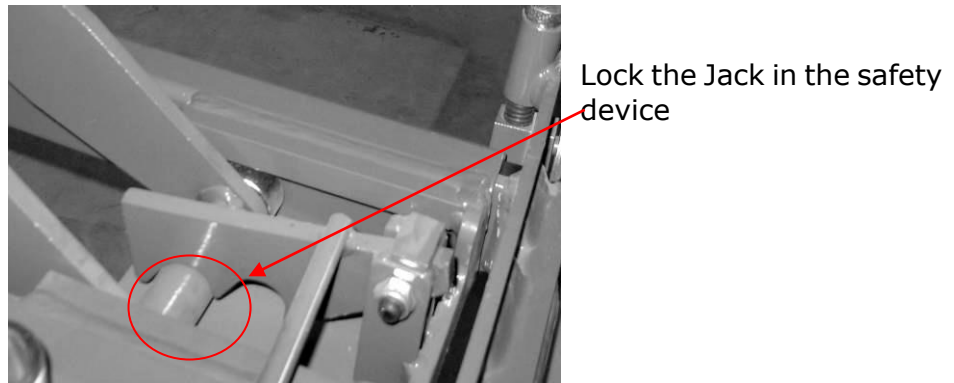


Fig.6

3. Lower the Jack.

3.1 Raise the Jack for few seconds to release the safety device, and then open the safety device by the safety device handle. (Fig. 7, Fig. 8)

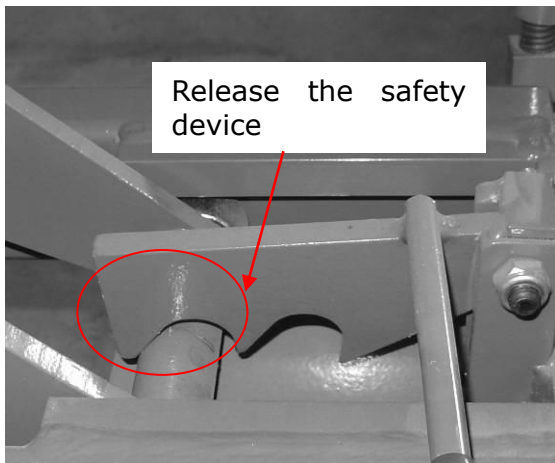


Fig. 7



Fig. 8

3.2 Lower the Jack

- ① Press the control plate of the air pump, the W-8 will going down to the lowest position (Fig. 9)
- ② Press the control plate to the level position while the W-8 stop lowering. (Fig.10)

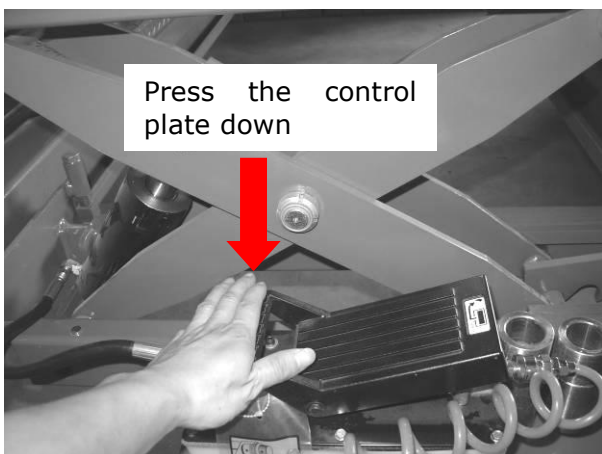


Fig. 9

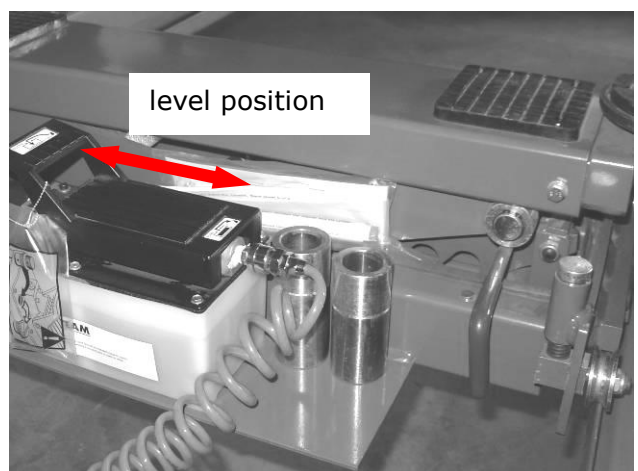


Fig.10

III.Exploded View

W-8

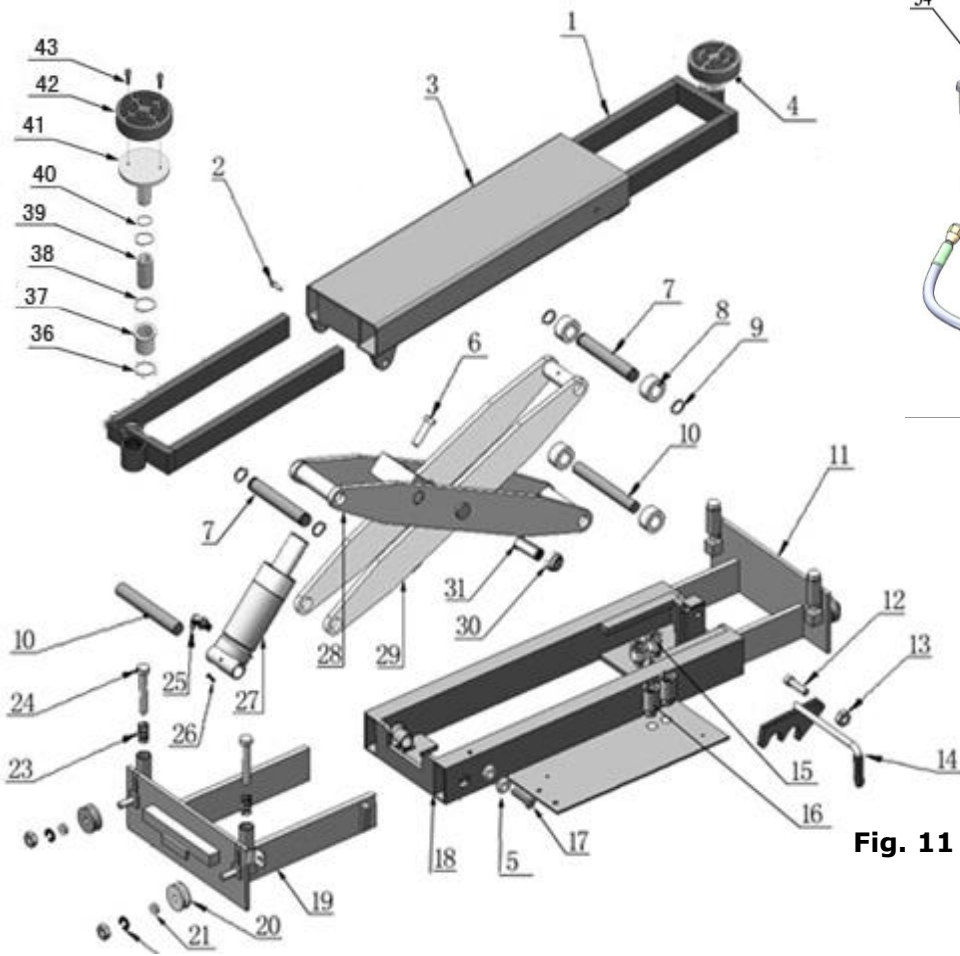


Fig. 11

Cylinder

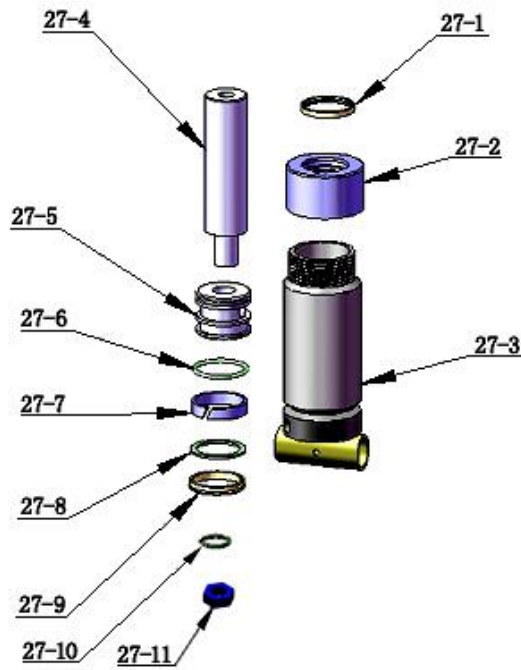


Fig. 12

IV.Spare parts for W-8

- **Parts for lift structure**

Item	Part No.	Description	QTY	Item	Part No.	Description	QTY
1	690020	Upper Extension (Left)	2	25	420097	90° Fitting	1
2	201022	Hex Bolt	2	26	420005	Fixing Bolt	1
3	690021	Upper Tube	1	27	680021	Oil Cylinder	1
4	690017	Rubber Pad Support assy.	2	28	680045	Outer scissor	1
5	209021	Hex Nut	2	29	680046	Inner scissor	1
6	680055	Hex Bolt	1	30	620022	Self locking Nut	2
7	680008	Pin for Upper Roller	2	31	680032	Scissors Pin	2
8	680009	Roller	4	32	420146	Fitting For Air line	1
9	206032	Snap Ring	4	33	670002	Air Pump	1
10	680011	Pin for Lower Roller	2	34	670005	Throttle valve	1
11	680038	Lower Extension (Right)	1	35	670004	Oil Hose	1
12	680013	Socket Bolt	1	36	201060	O Ring	2
13	206023	Self locking Nut	5	37	203024	Adjustment Adapter	2
14	680015	Safety Device	1	38	203042	Lock washer	4
15	203034	Stackable Adapter (3")	2	39	203025	Adjustment Screw	2
16	201062	Stackable Adapter (6")	2	40	203041	Lock washer	2
17	690019	Hex Bolt	2	41	203026	Rubber Pad Frame	2
18	680047	Base	1	42	203043	Rubber pad	2
19	680039	Lower Extension (Left)	1	43	420043	Socket bolt	4
20	680016	Pulley	4				
21	680031	Bearing	4				
22	680010	Snap Ring	4				
23	680018	Spring	4				
24	680019	Shaft	4				

- **Parts for W-8 Cylinder**

Item	Part No.	Description	QTY	Item	Part No.	Description	QTY
27-1	209078	Dust Ring	1	27-7	201029	Support Ring	1
27-2	670006	Head Cap	1	27-8	201030	Y Ring	1
27-3	670007	Bore Weldment	1	27-9	201030A	Support Ring	1
27-4	670008	Piston Rod	1	27-10	206069	O Ring	1
27-5	670009	Piston	1	27-11	206071	Hex Bolt	1
27-6	201031	O Ring	1				