

Rolling Jack Air Line Retrofit Kit

For 12,000lb Y Lifts with Max. wheel bases of:

179-1/2" and 189-1/2"

For 14,000lb 4-Post Lifts with Max. wheel bases of:

158", 182", and 215"

For 18,000lb 4-Post Lifts with Max. wheel bases of:

194" and 230"

Installation Instructions:

Insert Bulk Head Fittings:

1. Raise lift to comfortable working height, lower onto locks.

Note: Rolling jacks should already be installed on runways.

CAUTION Avoid damaging runway cables when drilling holes.

2. Insert two (2) bulkhead fittings through 7/8" holes from outside, secure with jam nut.

Note: Use Teflon tape or pipe dope on threaded fittings when needed.

Attach Recoil Hose Retaining Cable:

1. Using existing factory holes, attach retainer guide pin for the rear recoil hose with M8 nut and Ø8mm star washer, Fig. 6. Reference chart at bottom of page for proper cables and hoses.

2. Insert retainer cable through coils of recoil hose. Insert each end of cable into retainer guide pin. Secure each cable end with M6 x 10 cross recess pan head screw, Fig. 6.

3. Repeat for front recoil hose. Attach recoil hoses to rolling jacks, Fig. 1, and threaded branch tee.

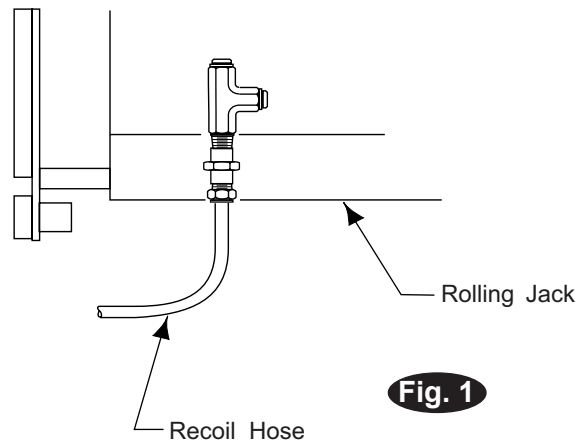


Fig. 1

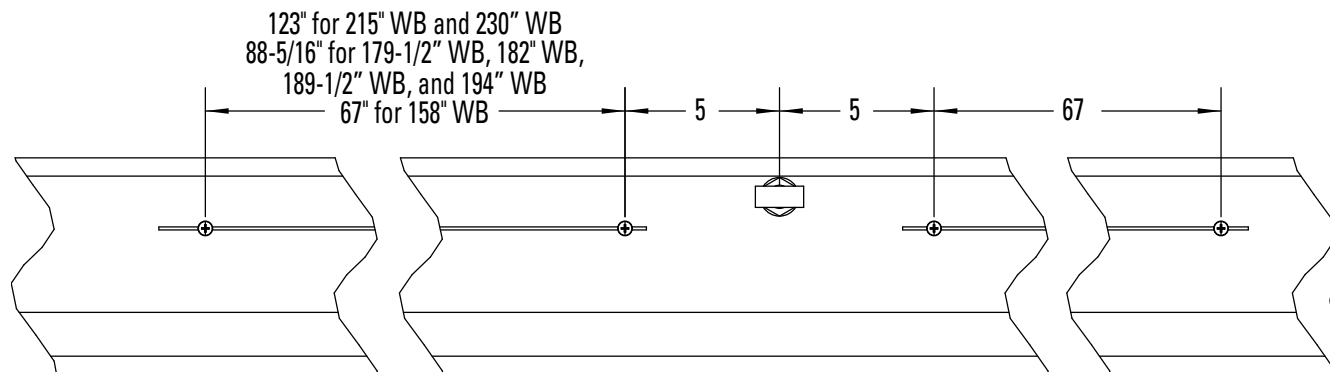


Fig. 2

LIFT MODEL/WHEELBASE LENGTH	FRONT HOSE	REAR HOSE	FRONT CABLE (length)	REAR CABLE (length)
SM14 158" WB/SMO14 158"	FC147-14	FC147-14	S110464Y (69")	S110464Y (69")
SM14 182" WB/SMO14 182" WB	FC147-14	S130160	S110464Y (69")	S110463Y (90-1/2")
SM14 215" WB/SMO14 215" WB	FC147-14	S130160	S110464Y (69")	S110462Y (125")
SM18 194" WB	FC147-14	FC147-14	XS130063 (66")	S130078 (87-5/16")
SM18EL2 230" WB	FC147-14	S130160	XS130063 (66")	S130159 (122")

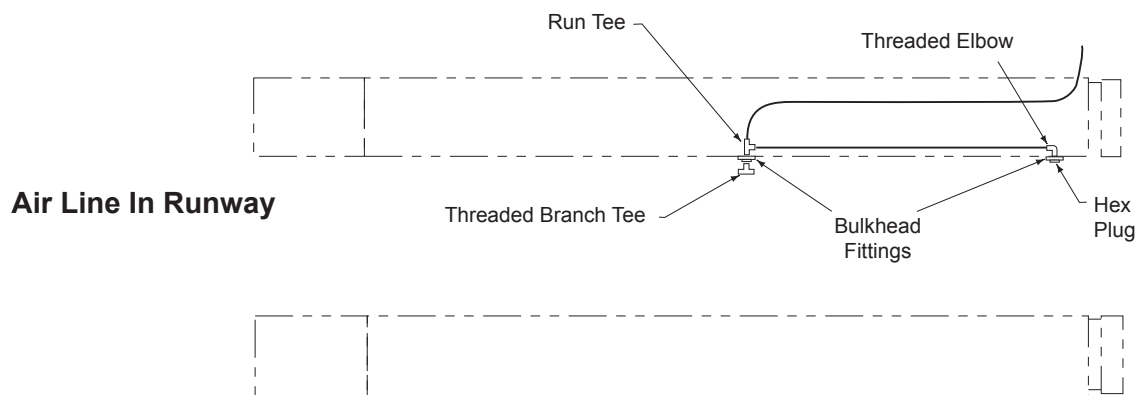
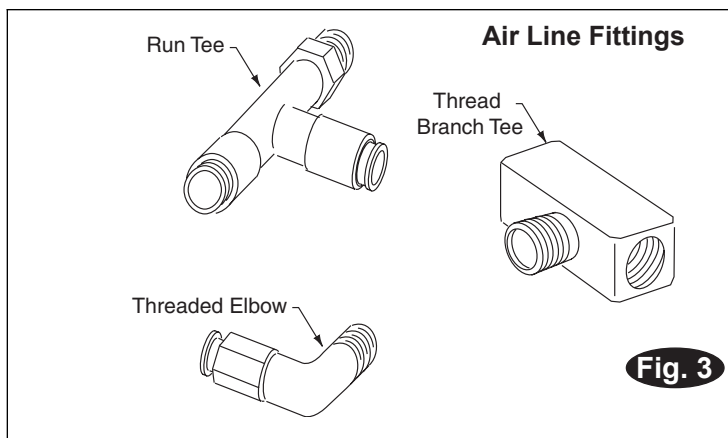
Air Line Installation

1. Thread male end of threaded elbow, Fig. 3, into front bulkhead fitting, Fig. 4. Thread hex plug into outside opening of same fitting.
2. Thread run tee into middle bulkhead fitting. Thread threaded branch tee into outside opening of bulkhead, Fig. 4.
3. There is a roll of 3/8" tubing that will make up the internal airline. Cut and assemble the tubing as shown in Fig. 4.

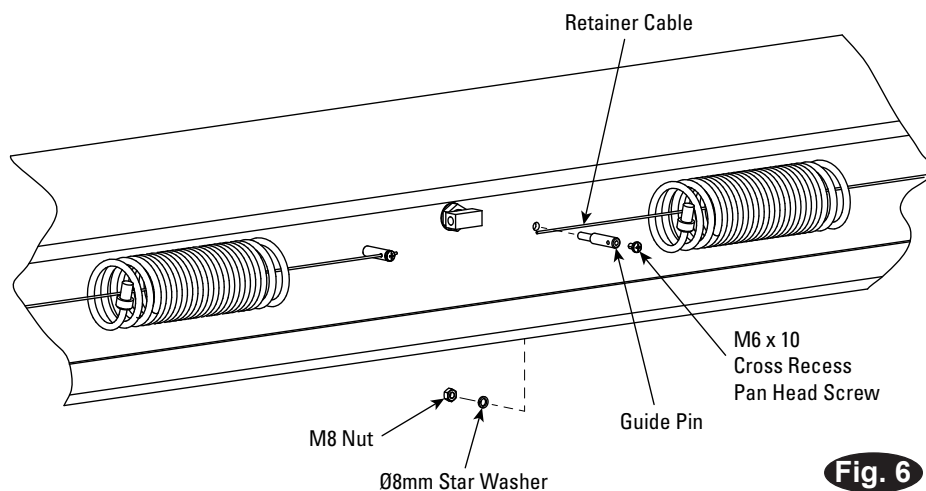
Note: To assemble air line tubing into fitting, use firm, manual pressure to push tubing into fitting until it bottoms, Fig. 5. If removal of the air line tubing from the

fitting is ever required, hold Push Sleeve in (against fitting) and, at the same time, pull out on tubing.

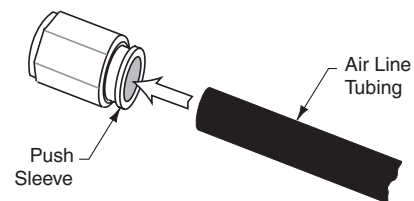
4. Cut off excess and connect other end to external air source.



Retainer Cable Installation



Air Tubing Insertion



Vehicle Service GroupSM
 2700 Lanier Drive
 Madison, IN 47250, USA
 1-800-640-5438
 www.vsgdover.com



© **Vehicle Service GroupSM**
 All Rights Reserved. Unless otherwise indicated, **Vehicle Service GroupSM**, and all other trademarks are property of Dover Corporation and its affiliates.